

Contact

Central Study Advisory and Counseling Service

Poppelsdorfer Allee 49 | 53115 Bonn

Phone: +49 228 73-7080

Mail: zsb@uni-bonn.de

 www.uni-bonn.de/study-advisory-service

Degree Programs at the University of Bonn

Degrees | Contents | Lines of Work



Central Study Advisory and Counseling Service

B

Bachelor

M

Master

E

State Exam | Church Degree

L

Teaching Degree

Degree Programs at the University of Bonn

Degrees | Content | Lines of Work

This brochure provides an overview of the **postgraduate degree programs** at the University of Bonn, including information on degrees, content and possible lines of work.

Please find additional and most recent information on admission requirements, application modalities as well as our range of undergraduate degree programs at

 www.studienangebot.uni-bonn.de

For more information on studying at the University of Bonn, please visit

 www.uni-bonn.de/studium

Postgraduate degrees	4
Master of Arts (MA).....	6
Master of Science (MSc).....	44
Master of Education (MEd).....	78
Master's degree programs for continuing education.....	102
Degree programs A–Z	112
Online references	115

Postgraduate degrees

To enroll for a postgraduate degree program, students will first need to graduate from a university undergraduate degree program. In most cases, additional admission requirements apply, such as subject-specific qualifications, language skills or a minimum grade in the first university degree. The most common type of postgraduate degree programs are master's degree programs, which deepen students' academic training and allow for setting an individual study focus and specializing in a specific area of the respective discipline.

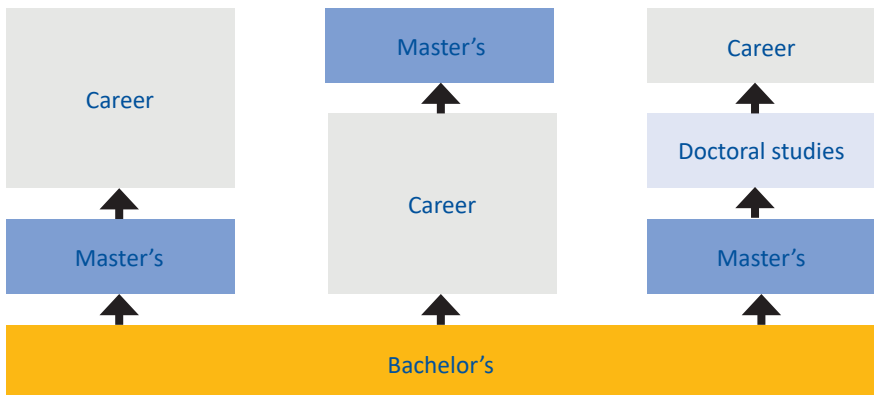
At the University of Bonn, multilingualism and cultural diversity are considered to be valuable resources that complement subject-specific qualifications. This is why, in addition to curricular language modules, students have access to a diverse range of language-learning offers, including the independent-study offers at the Center for Language Learning (Sprachlernzentrum, SLZ) in which they can autonomously learn a foreign language or enhance existing language skills. Furthermore, students can apply for the "Certificate of Intercultural Competence" free of charge, which promotes extra-curricular and interdisciplinary activities of international or intercultural nature.

www.sprachen.uni-bonn.de

www.uni-bonn.de/zertifikat-interkulturelle-kompetenz

M MASTER

In the multi-step bachelor's/master's system, master's degree programs constitute the so-called **advanced postgraduate phase** following the undergraduate bachelor's studies, leading to a second university degree. The system allows for flexible planning of academic training and career: Graduates can enroll for a master's degree program immediately after obtaining their bachelor's degree or with a period of professional activity in between.



Doctoral studies, as the next step in academic training, usually require a master's degree. In many professional areas, higher and managerial positions often require a master's degree as well.

Following its research-oriented approach, the University of Bonn offers a minimum of one consecutive **master's degree program** for each bachelor's degree program, aiming to deepen and specialize formerly acquired knowledge in the field. At the University of Bonn, a master's degree program designed for four semesters awards 120 ECTS credit points.

MASTER OF ARTS (MA)

Degree awarded to graduates from master's degree programs in languages, cultural studies, social sciences and arts.

MASTER OF SCIENCE (MSc)

Degree awarded to graduates from master's degree programs in mathematics, natural sciences, economics, agricultural sciences, forestry, nutrition sciences and psychology.

MASTER OF EDUCATION (TEACHING DEGREE)

The academic phase of teacher education in North Rhine-Westphalia is divided into a bachelor's degree program and a master's degree program. This is followed by 18 months of practical teacher training. Only when all three units of teacher education are completed, graduates may work as teachers at public schools. In Bonn, students can pursue a **teaching degree for grammar and comprehensive schools** or a **teaching degree for vocational schools**.

L

MASTER'S DEGREE PROGRAMS FOR CONTINUING EDUCATION

Professionals who wish to further qualify in their field can enroll for a so-called **master's degree program for continuing education**. In order to be admitted, applicants must already hold a university degree and have a minimum of one year of relevant professional experience. Master's degree programs for continuing education are subject to tuition. The amount of tuition depends on the range of courses in the particular degree program and is based on the program's scale of charges.

- 
- ◉ Anthropology of the Americas
 - ◉ Applied Linguistics
 - ◉ Archaeological Sciences
 - ◉ Art History
 - ◉ Asian Studies
 - ◉ Comparative Literature
 - ◉ Cultures of Modernity in Music and Sound
 - ◉ Dependency and Slavery Studies
 - ◉ Ecumenical Studies
 - ◉ English Literatures and Cultures
 - ◉ European and Asian Art History
 - ◉ Extended Ecumenical Studies
 - ◉ German and Comparative Literature
 - ◉ German Language and Literature
 - ◉ German-French Studies
 - ◉ German-Italian Studies
 - ◉ History
 - ◉ Interreligious Studies – Philosophy of Religions
 - ◉ Latin American Cultural Studies / Estudios culturales de América Latina
 - ◉ Linguistics
 - ◉ Media Studies
 - ◉ Medieval Studies
 - ◉ North American Studies
 - ◉ Old Catholic and Ecumenical Theology
 - ◉ Philosophy
 - ◉ Political Science
 - ◉ Protestant Theology
 - ◉ Provenance Research and History of Collecting
 - ◉ Renaissance Studies
 - ◉ Romance Studies
 - ◉ Scandinavian Studies
 - ◉ Slavery Studies
 - ◉ Sociology
 - ◉ Spanish Culture and European Identity
 - ◉ Transcultural Studies / Cultural Anthropology
 - ◉ Transnational European and East Asian Culture and History – TEACH

Master of Arts (MA)



FACULTY OF ARTS

Anthropology of the Americas

This degree program explores the “New World”, i.e. the American continent with its diverse cultural development phenomena that allow for comparisons with cultural developments in the history of the Old World. The Anthropology of the Americas degree program focuses in particular on exploring Indigenous societies in Latin America as well as their global connections, both in history and today.

Students acquire methodological and theoretical knowledge in cultural and social studies as well as profound regional knowledge of Latin America. The degree program covers the fields of archaeology (materials, epigraphy and iconography), history (working with sources) and ethnology (questions on organizational structures and (inter)cultural integration). A core element is becoming proficient in an Amerind language.

Graduates of the degree program have the ability to independently and analytically answer questions on cultural processes in past and present Latin America as well as to present study results in a tangible way. In addition to language proficiency, regional knowledge and methodological/analytical skills, students of this degree program acquire intercultural and interdisciplinary competences.

+ POSSIBLE LINES OF WORK

Academia (teaching/research at universities, research institutions, etc.), museums, cultural/research management, media and publishing, international organizations and companies (foundations, authorities, NGOs, tourism, etc.), development cooperation, public relations, adult education.

Degree	Language of instruction	Standard period of study	Start of program
Master of Arts (MA)	English, Spanish and German	4 semester	Winter semester
Admission requirements			
<ul style="list-style-type: none"> • University degree (German or non-German) in a relevant discipline • English language proficiency (CEFR level B2) • Minimum grade of 2.3 or local equivalent • Specific modules with a certain amount of ECTS credits (see examination regulations) 			



FACULTY OF ARTS

Applied Linguistics

Applied Linguistics is an interdisciplinary master's degree program at the interface between research and practice. It covers the fields of language, social communication, media, organizations, business and politics. Core modules are intercultural communication, second language acquisition, language processing and translation studies. In these modules, a closer look is taken at aspects of interpersonal communication, regional and social differences in language behavior, (im)politeness in different cultures, pragmatic competence, writing in a second language and cognitive processes during translation, among others. The degree program furthermore offers courses and research support in the fields of pragmatics, discourse analysis, genre analysis, sociolinguistics, dialectology, cognitive linguistics, psycholinguistics and theoretical lexicography.

Students learn to plan and carry out their own research projects, for which they have access to linguistic research facilities, such as the Research Center for Empirical Pragmatics, offering a large variety of research instruments including recording devices, language corpora as well as data collection, data processing and data analysis software.

+ POSSIBLE LINES OF WORK

Academia (universities, universities of applied sciences, public and private research institutions), adult education at universities (in Germany or abroad), publishing, libraries, translating, editing (e.g. English-language editing), cultural institutions, embassies (regional cultural work, exhibitions, etc.), cultural institutes, print media, radio, television, online media, journalism, public relations (agencies, foundations, authorities, private businesses, associations), market research, international relations and cooperation (e.g. EU institutions), international organizations

Degree	Language of instruction	Standard period of study	Start of program
Master of Arts (MA)	English	4 semester	Winter semester
Admission requirements			
<ul style="list-style-type: none"> • University degree (German or non-German) in a relevant discipline • German language proficiency (CEFR level B2) • English language proficiency (CEFR level C1) • Specific modules with a certain amount of ECTS credits (see examination regulations) 			



FACULTY OF ARTS

Archaeological Sciences

Students of the Archaeological Sciences degree program can choose between four specialties: Classical Archaeology, Christian Archaeology, Pre- and Early Historic Archaeology as well as Egyptology. Each specialty focuses on deepening relevant archaeological knowledge through conventional course formats as well as practical elements, such as field trips or practical courses, in a research-oriented way. In addition to their primary specialty, students choose a secondary archaeological specialty to complement their profile. Alternatively, students may design their study program according to their individual interests by freely combining courses from the above-mentioned specialties as well as from Islamic Archaeology, Ancient History, Medieval History, Art History and Museum Studies.

This allows students to increase their knowledge of essential monuments and continuously develop their analytical and research skills using interdisciplinary approaches and methods, enabling them to conduct independent research and take a critical stance in expert discussions.

+ POSSIBLE LINES OF WORK

Historic preservation authorities, culture (event management), museums (curator, tours, logistics), insurance (e.g. verification activities), tourism (study tour guide, program development), public relations (e.g. in museums, cultural institutions/associations, private businesses), academia (research management, teaching/research at universities or research institutions), journalism/editing, publishing

Degree	Language of instruction	Standard period of study	Start of program
Master of Arts (MA)	German	4 semester	Summer and winter semester
Admission requirements			
<ul style="list-style-type: none"> • University degree (German or non-German) in archaeologies or a related discipline • German language proficiency (CEFR level C1) • Other language skills (depending on specialty) • Minimum grade of 3.0 or local equivalent • Specific modules with a certain amount of ECTS credits (see examination regulations) 			



FACULTY OF ARTS

Art History

The Art History degree program conveys to students research-oriented knowledge and methodological autonomy in the entire field of art history. The central learning objective is the ability to apply analytical procedures and methods from the field of art history in both theoretical and practical environments.

In the course of the degree program, students deepen their knowledge of medieval, modern and contemporary art works in both conventional teaching formats and more practice-oriented sessions such as field trips or exercises before original works of art. The curriculum is supplemented by a module in the field of provenance research, which is understood as trans-disciplinary contextual research across historical periods. In addition, questions of genre and media are discussed, evaluated and artistically appreciated.

Students have the option to prioritize one of the following periods of art: Middle Ages, Renaissance to Early Modern Period or Modern Period. Students may also add one of the following complementary fields to their curriculum: History (with focus on medieval or modern history), Romance Studies, Archaeological Sciences (with focus on Classical or Christian Archaeology), Comparative Literature, German Language and Literature or Museum Studies.

+ POSSIBLE LINES OF WORK

Museums/preservation of monuments and historic buildings/art dealing (galleries, aucMuseums/preservation of monuments and historic buildings/art dealing (galleries, auction houses), exhibitions (curator, lending operations), culture (administrative specialist e.g. in cultural institutions or municipal cultural affairs offices), insurance (appraisals, claims settlement), publishing (editing), academia (research management, teaching/research at universities/research institutions), tourism (art and cultural museums, development of cultural tourism programs), public relations (at cultural institutions, companies), journalism/editing

Degree	Language of instruction	Standard period of study	Start of program
Master of Arts (MA)	German	4 semester	Summer and winter semester
Admission requirements			
<ul style="list-style-type: none"> • University degree (German or non-German) in archaeologies or a related discipline • German language proficiency (CEFR level C1) • Specific modules with a certain amount of ECTS credits (see examination regulations) 			



Asian Studies

A strong emphasis on its research focus lies at the heart of the Asian Studies degree program. Students develop critical and reflective as well as practical skills in a chosen specialty from Oriental and Asian studies. This particularly includes dealing with sources in the original language. Besides acquiring scientific expert knowledge aligned with current international standards, students are enabled to practically apply, critically evaluate and creatively develop their skills on their own account.

The Department of Oriental and Asian Studies offers the following specializations: Arabic Studies and Translation, Chinese Language and Translation, Islamic Archaeology, Islamic Studies, Japanese Studies, Korean Studies, Asian and Oriental Art History, Mongolian Studies, Religious Studies, Chinese Studies, South Asian Studies, Southeast Asian Studies, Tibetan Studies, Turkish History and Society as well as Economics and Society in Asia. Students can follow up on this specialized training in postgraduate and doctoral programs. In addition to the modules relevant for their specialization, students can individually add courses from the range of elective modules offered at the Department to refine their curriculum.

+ POSSIBLE LINES OF WORK

Intercultural communication, intercultural management, international development cooperation, peace and conflict research, international educational work (adult education, language courses, etc.), politics (policy consulting), culture (conservation/maintenance/management of global cultural heritage, cultural institutions, culture management, museums, etc.) tourism (long-distance, educational and cultural tourism), journalism, academia (teaching/research at universities, research institutions, etc.)

Degree	Language of instruction	Standard period of study	Start of program
Master of Arts (MA)	German and English	4 semester	Winter semester

Admission requirements

- University degree German or non-German) in a relevant discipline
- German language proficiency (CEFR level C1)
- Minimum grade of 3.0 or local equivalent
- Specific modules with a certain amount of ECTS credits (see examination regulations), this includes language modules in an Asian or Oriental language.



FACULTY OF ARTS

Comparative Literature

Comparative literature is the study of literature in its transnational, intercultural and cross-media dimensions. The degree program deals with cultural sensemaking processes that cannot be adequately comprehended within the purview of individual philologies or by a purely literary analysis. Crossing the boundaries between languages, cultures and disciplines is a key characteristic of comparative work.

The master's degree program Comparative Literature conveys historical-philological knowledge to students and introduces them to the field's traditional questions about the history of themes, problems and genres. Furthermore, the degree program explores innovative fields of study in cultural and media studies as well as in comparative arts. Students gain insights into the processes of cultural and media globalization and thus acquire competencies that are indispensable for employment in an increasingly international cultural industry and other fields.

Building on the basis of solid theoretical training, students can include their own interests and sharpen their profiles by choosing a foreign language to learn, going abroad or focusing on a specific methodology.

+ POSSIBLE LINES OF WORK

Education (adult education, language courses, educational/vocational institutes (Bildungswerke), etc.), book industry (publishing/libraries/translating/editing), culture (embassies, cultural institutions, exhibitions, etc.), media (press, radio, television, on-line media, journalism, public relations), administration (international relations, e.g. diplomatic service, international organizations), academia (research management, teaching/research at universities, research institutions, etc.)

Degree	Language of instruction	Standard period of study	Start of program
Master of Arts (MA)	German	4 semester	Summer and winter semester

Admission requirements

- University degree (German or non-German) in a relevant discipline
- German language proficiency (CEFR level C1); English language proficiency (CEFR level B2)
- Knowledge of an additional modern language (language proficiency CEFR level B2) or Latin or Greek (the latter two requiring a proficiency certificate)
- Minimum grade of 3.0 or local equivalent
- Specific modules with a certain amount of ECTS credits (see examination regulations)



FACULTY OF ARTS

Cultures of Modernity in Music and Sound

The degree program Cultures of Modernity in Music and Sound focuses on questions regarding the configuration and conception of music and sound as well as the practices, discourses and media related to them. Furthermore, questions regarding music's place in modern societies within the context of globalization are explored. "Modernity" is understood here in the sociological-historical sense, which originated around 1800, in contrast to the aesthetic-artistic sense of modernism. Given this sense of modernity, the focus of the degree program is less on certain varieties of music than on the social, cultural, technological and media-historical conditions and processes (e.g. industrialization and mediatisation) in which humans play music and produce sound, being influenced by both.

Students deepen their scientific knowledge of musicology and sound studies, learning to critically analyze the limitations of academic theories and discourses. Additionally, students broaden their methodological competences, enabling them to autonomously develop scientific ideas and implement them in self-organized research projects. By delving into aspects of musical globalization, students are also sensitized to intercultural communication.

+ POSSIBLE LINES OF WORK

Media (radio, television, online music portals), press (music criticism), music publishers (proofreading, editing), music and media industry, the cultural and creative economy (music and sound production and distribution, culture and event management), musical theater (dramaturgy, director assistance), music libraries/archives, industry and trade associations, foundations, academia (research management, teaching/research at universities, research institutions)

Degree	Language of instruction	Standard period of study	Start of program
Master of Arts (MA)	German	4 semester	Winter semester

Admission requirements

- University degree (German or non-German) in a relevant discipline
- German language proficiency (CEFR level C1)



FACULTY OF ARTS

Dependency and Slavery Studies

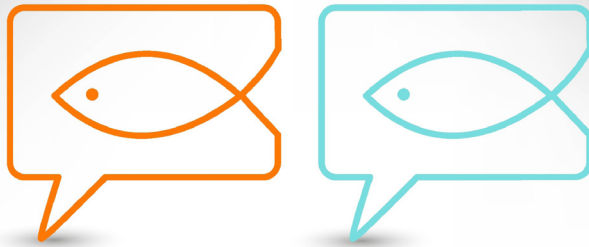
Dependency and Slavery Studies is an international and interdisciplinary master's degree program designed for a study period of four semesters. It is taught entirely in English and aimed at students with a focus on or interest in the fields of history, material and/or social sciences. Based on the new research concept of "strong asymmetrical dependency", this program opens up new approaches to studying and researching slavery and other forms of strong asymmetric dependency from an interdisciplinary perspective. In investigating deeply entrenched relationships of social dependency such as slavery, serfdom or debt bondage in different epochs, geographies and cultures, the focus of this program is not the modern world but its multifaceted historical origins in Asian, American, African and European societies. The overarching objective is to break free of the binary opposition "slavery versus freedom". To a lesser extent, this degree program also offers insights to present-day phenomena of extreme asymmetrical dependency in order to explore this subject in various contexts of today's world.

Students learn to classify research questions across disciplines and independently solve complex problems while expanding their methodological and analytical competencies. In this context, transcultural comparison is seen as a central aspect in the research of slavery and other forms of dependency.

+ POSSIBLE LINES OF WORK

NGOs, policy consulting, development collaboration, academia (research management, teaching/research at universities, research institutions, etc.), editing/publishing, museums, adult education

Degree	Language of instruction	Standard period of study	Start of program
Master of Arts (MA)	English	4 semester	Winter semester
Admission requirements			
<ul style="list-style-type: none"> • University degree (German or non-German) in a relevant discipline • English language proficiency (CEFR level C1) • Minimum grade of 2.5 or local equivalent 			



Ecumenical Studies

Ecumenical Studies is an international and interdisciplinary degree program that is taught in English and aimed at students with different religious and cultural backgrounds. While the standard degree program covers two semesters, students may also choose to deepen their studies even further within the four-semester degree program Extended Ecumenical Studies.

Based on the assumption that activity in the ecumenical movement requires specialized historical and theological knowledge and on both degree programs' international and interdisciplinary focus, the overall objective is to make a contribution to the current, continually growing inter-religious dialogue and the relationship between church and society. This aim is reflected in the orientation of the curricula, which is towards the plurality of Christianities, (extra-)European churches and theologies, the types of unity being sought among the churches and within Christianity as well as the concepts of peaceful and respectful interaction among religions. Students are enabled to assess research questions across disciplines and independently solve complex problems while expanding their methodological and analytical competencies. Open reflection on the diverse religious and cultural backgrounds of students and instructors is regarded as a central aspect of the research-oriented profile of these degree programs.

+ POSSIBLE LINES OF WORK

Ecumenical activism (coordination of ecumenical relationships), religion journalism, academia (research management, teaching/research at universities, research institutions, etc.), editing/publishing, adult education.

Degree	Language of instruction	Standard period of study	Start of program
Master of Arts (MA)	English	2 resp. 4 semester	Winter semester

Admission requirements

- University degree (German or non-German) in a relevant discipline with at least 240 ECTS
- English language proficiency (CEFR level B2)
- Specific modules with a certain amount of ECTS credits (see examination regulations)
- Applicants from outside Germany or another EU country must pass the aptitude test for university studies.



FACULTY OF ARTS

English Literatures and Cultures

The master's degree program English Literatures and Cultures covers the literatures and cultures of Great Britain and the post-colonial world. In this program, applicants who have completed a relevant undergraduate degree can expand and deepen their knowledge and understanding of the subject matter while developing advanced research competencies.

The content focus of this degree program is on the English Renaissance as well as British literature and culture of the 18th, 19th and 20th centuries up to the present. In addition, post-colonial literary criticism and cultural studies are covered in greater depth. Due to the interdisciplinary focus of this program, the in-depth study of language, literature and culture always includes questions from the areas of history, philosophy, politics, and media studies. In the course of the degree program, students can tailor their studies to their individual preferences by choosing different elective and research modules.

+ POSSIBLE LINES OF WORK

Cultural management (theater, opera, museum, etc.), international language institutes (adult education), journalism/media industry, communications industry (advertising, public relations, translation), book industry (libraries, booksellers, publishers), international cultural relations, marketing, tourism, international organizations/authorities/governmental or non-governmental organizations, teaching at a public school, academia (research management, teaching/research at universities, research institutions, university administration, etc.)

Degree	Language of instruction	Standard period of study	Start of program
Master of Arts (MA)	English	4 semester	Summer and winter semester
Admission requirements			
<ul style="list-style-type: none"> • University degree (German or non-German) in a relevant discipline • German language proficiency (CEFR level B2) • Specific modules with a certain amount of ECTS credits (see examination regulations) 			



FACULTY OF ARTS

European and Asian Art History

The degree program European and Asian Art History, which is taught in German and English, equips students with research-oriented, interdisciplinary knowledge in the two adjacent academic fields of European Art History and Oriental and Asian Art History. The curriculum is supplemented by courses in the area of provenance research. Provenance research is understood as trans-disciplinary context research, which indicates the diversity of the values ascribed to art and cultural objects in various social constellations and by individuals.

As central competencies, students develop in-depth knowledge of art history across various geographic regions and epochs, methodological autonomy in the cultures of various specialized fields and intercultural transfer knowledge. In particular, they expand their skills with regard to analysis processes and art-history methodology. Students can set thematic priorities for the following areas: current research questions (genres and media, art historical classification and criticism), colloquiums/personal project and practical experience.

+ POSSIBLE LINES OF WORK

Exhibitions (curator work, guided tours), culture (administrative specialist at cultural institutions, municipal cultural affairs offices), museums/monument preservation/art dealing (galleries, auction houses), public relations, insurance (appraisals, claims settlement), tourism (municipal art/cultural museums, cultural tourism guide/program development), academia (research management, teaching/research at a university or research institution)

Degree	Language of instruction	Standard period of study	Start of program
Master of Arts (MA)	German and English	4 semester	Summer and winter semester

Admission requirements

- University degree (German or non-German) in a relevant discipline
- German language proficiency (CEFR level C1)
- English language proficiency (CEFR level B2)
- Minimum grade of 3.0 or local equivalent
- Specific modules with a certain amount of ECTS credits (see examination regulations)



FACULTY OF ARTS

German and Comparative Literature

In the bi-national degree program German and Comparative Literature, students study two subjects at two excellent universities, benefiting from an ideal setting to acquire competences in literature and cultural studies. The degree program covers content and methods of German Studies as well as comparative literature and cultural studies, with a main focus on literature and its transnational, intercultural and cross-media interconnections. Hence, this program goes beyond the more narrow scope of pure literary analysis and individual philologies.

The dual content focus of this master's degree program is also reflected in its bi-national composition, which includes academic stays both at the University of Bonn and the partner university in St. Andrews. Students are thus given the unique opportunity to build on their theoretical knowledge with practical first-hand experience in two academic cultures and countries. Graduates of the program earn a German-Scottish double Master of Arts/ Master of Letters degree offering manifold professional prospects in Germany and abroad.

+ POSSIBLE LINES OF WORK

Education (adult education, language courses, educational institutes, etc.), book industry (publishing/libraries/translating/editing), culture (cultural institutions, embassies, exhibitions, etc.), media (press, radio, television, on-line media, journalism, public relations), administration (international relations, e.g. diplomatic service, international organizations), academia (research management, teaching/research at universities, research institutions, etc.)

Degree	Language of instruction	Standard period of study	Start of program
Master of Arts (MA)	German and English	4 semester	Wintersemester
Admission requirements			
<ul style="list-style-type: none"> • University degree (German or non-German) in a relevant discipline • German and English language proficiency (CEFR level C1) • Knowledge of one of the following languages: French, Italian, Spanish, Russian, Swedish, Danish or Norwegian (language proficiency CEFR level B2) • Minimum grade of 2.5 or local equivalent • Specific modules with a certain amount of ECTS credits (see examination regulations) 			



FACULTY OF ARTS

German Language and Literature

The two focus areas of the German Language and Literature degree program are the study of German-language literature, which is examined in its literary history, cultural history and media dimensions from its beginnings to the present day, and the study of the German language from its early stages as a language up to its modern day form. In Bonn, German Language and Literature is understood as a broad-based discipline that is closely aligned with cultural and media studies, closely cooperating with other disciplines as well.

The German Language and Literature master's degree program offers students a primarily research-oriented education: courses are closely aligned with current research questions and students participate in on-going research projects, gaining insight into forms of academic organization and presentation. The degree program offers a wide range of options as students choose a profile as individual focus for their studies, allowing them to pursue their personal interests and inclinations. Possible profiles are Medieval Studies, Linguistics and Modern German Literature.

+ POSSIBLE LINES OF WORK

Education (adult education, language courses, educational institutes, etc.), book industry (publishing/libraries/translating/editing), culture (culture management, exhibitions, etc.), media (press, radio, television, on-line media, journalism, public relations), administration (international relations, e.g. diplomatic service, international organizations), academia (research management, teaching/research at universities, research institutions, etc.)

Degree	Language of instruction	Standard period of study	Start of program
Master of Arts (MA)	German	4 semester	Summer and winter semester
Admission requirements			
<ul style="list-style-type: none"> • University degree (German or non-German) in a relevant discipline • German language proficiency (CEFR level C1) • Minimum grade of 3.0 or local equivalent • Specific modules with a certain amount of ECTS credits (see examination regulations) 			



German-French Studies

The unique profile of the master's degree program in German-French Studies at the Universities of Bonn and Paris Sorbonne derives from the program's bi-national philological orientation. Students in this program primarily study the main subjects of French and German studies in equal parts.

German-French Studies convey in-depth, specialized and theoretical knowledge in the areas of philology and cultural studies on an interdisciplinary and intercultural level. The contrastive focus of the degree program – incorporating German and French philology as well as time spent studying at a German and French university – familiarizes students with the methodological differences between the two countries, both of them leading lights in research. A well-grounded education in literature and linguistics is key to an independent, thoughtful and methodologically adequate work method in central topics of the two fields. Establishing an individual profile and research emphasis—in the sense of an academic or occupational qualification—is possible and desirable. Graduates of this degree program receive their master's degree as a double diploma from both universities.

+ POSSIBLE LINES OF WORK

Cultural/research management, Franco-German cultural/economic relations, journalism, public relations, media/communications industry (advertising, PR, translation), book industry (publishers, libraries, booksellers), adult education, international organizations/public authorities, tourism, academia (teaching/research at universities, research institutions, etc.)

Degree	Language of instruction	Standard period of study	Start of program
Master of Arts (MA)	German and French	4 semester	Winter semester
Admission requirements			
<ul style="list-style-type: none"> • University degree (German or non-German) in a relevant discipline • German language proficiency (CEFR level C1) • French language proficiency (CEFR level C1) • Specific modules with a certain amount of ECTS credits (see examination regulations) 			



FACULTY OF ARTS

German-Italian Studies

The international degree program German-Italian Studies / Studi Italo-Tedeschi at the Universities of Bonn and Florence (Università degli Studi di Firenze) follows up on the international bachelor's degree program of the same name. The research-oriented master's degree program particularly deepens the students' subject-specific knowledge, supplements it with interdisciplinary aspects and expands their competencies in theory and methodology.

The degree program has a bi-national cultural studies focus on Germany and Italy with the main subjects of Italian and German studies, each of which contains elements of linguistics, literature, cultural studies and media studies. The program addresses both the cultural and literary histories of Germany and Italy up to the present and investigates the historical development and current structures of the two languages. In addition, students choose modules from the areas of Political Science/Sociology and Art History.

This master's degree program includes at least one semester of study at the Università degli Studi di Firenze and offers the possibility to simultaneously obtain the Master of Arts and the Italian Laurea magistrale.

+ POSSIBLE LINES OF WORK

Cultural and research management, journalism/media industry, communications industry (advertising, PR, translation), book industry (publishers, libraries, booksellers), German-Italian cultural and economic relations, international organizations and authorities, academia (teaching/research at universities, educational institutions, etc.)

Degree	Language of instruction	Standard period of study	Start of program
Master of Arts (MA)	German and Italian	4 semester	Summer- and winter semester
Admission requirements			
<ul style="list-style-type: none"> • University degree (German or non-German) in a relevant discipline • German language proficiency (CEFR level C1) • Italian language proficiency (CEFR level C1) • Specific modules with a certain amount of ECTS credits (see examination regulations) 			



History

History involves the methodological exploration of historical events, persons, objects, structures and processes. The master's degree program History conveys advanced research-oriented knowledge of German, European and extra-European history from antiquity to the present.

The program is divided into a total of nine different specializations, allowing students to develop clearly defined profiles from the first semester. These specializations are as follows: General History, Ancient History, Medieval History, Historical Fundamental Sciences, Early Modern History and History of the Rhineland, Contemporary History, Eastern European History, Constitutional, Social and Economic History and Modern International History. Within their specializations, students can choose from a large range of courses, giving them a high degree of freedom in shaping their own profiles.

+ POSSIBLE LINES OF WORK

Archiving, publishing, libraries, media (newspapers, trade/professional journals, publishing houses, radio, television, etc.), public relations/press work, teaching at schools, adult education, tourism, museums/cultural institutions, policy consulting, foreign service, academia (teaching/research at universities, research institutions, etc.)

Degree	Language of instruction	Standard period of study	Start of program
Master of Arts (MA)	German	4 semester	Summer and winter semester
Admission requirements			
<ul style="list-style-type: none"> • University degree (German or non-German) in history or a related discipline • German language proficiency (CEFR level C1) • Knowledge of Latin (depending on specialty) • Minimum grade of 3.0 or local equivalent • Specific modules with a certain amount of ECTS credits (see examination regulations) 			



Interreligious Studies – Philosophy of Religions

At the heart of this interdisciplinary degree program lies a religious philosophy that is understood as the philosophy of certain religiously determined ways of life. In this light, students examine religious lifestyles and rites as well as the claims to truth raised by religions and atheism alike. The concept of religion developed in this manner is an indication of how connections could be drawn between different religions to facilitate rational communication.

The interdisciplinary focus of the degree program is also reflected in its curriculum, which integrates teaching staff from various fields of specialization: Old Catholic/ Protestant/ Catholic theology, educational sciences, Indian studies, Islamic studies, philosophy, law and religious studies.

The aim of the degree program is for students to acquire subject-specific, scientific and generic key competences in the context of interreligious, intercultural and interdisciplinary questions. Students develop the ability to understand religious convictions from various perspectives and thus to think from a perspective outside of their own world view, solve problems independently and work in a team.

+ POSSIBLE LINES OF WORK

Management/participation in organizations for interreligious dialog (churches, Alevi communities); dialog representatives of regional churches/dioceses; work on municipal/ state level (integration representative), work for ministries/local government and groups with migrant backgrounds; continuing education at public/private funding institutions (presentations and education and dialog for ministries, teachers, political parties); intercultural communication

Degree	Language of instruction	Standard period of study	Start of program
Master of Arts (MA)	German	4 semester	Winter semester
Admission requirements			
<ul style="list-style-type: none"> • University degree (German or non-German) in a relevant discipline • German language proficiency (CEFR level C1) • Specific modules with a certain amount of ECTS credits (see examination regulations) 			



FACULTY OF ARTS

Latin American Cultural Studies / Estudios culturales de América Latina

Latin American Cultural Studies/Estudios culturales de América Latina is a degree program that is oriented toward cultural studies, has an international focus and is taught in three languages (Spanish, German and English). The program is aimed at students who seek to extend their knowledge of Latin America with regard to current debates and research in the field of cultural studies as well as enhance their Spanish language skills.

The degree program focuses on studying contemporary cultural processes in Latin America from an interdisciplinary perspective, using insights and methods from the fields of literature, language, media and ethnohistory. Working with literary and cultural-anthropological research studies, students explore current transformation processes and learn to analyze them in their social contexts as well as in terms of their theoretical significance.

This degree program is jointly offered by the Romance Studies and the Anthropology of the Americas departments. This gives students the opportunity to grasp cultural processes in their historical profundity.

+ POSSIBLE LINES OF WORK

Academia (teaching/research at universities, research institutions, etc.), research/cultural management, media and publishing, international organizations/companies with focus on Latin America (foundations, public authorities, NGOs, tourism, etc.), development cooperation, public relations, adult education

Degree	Language of instruction	Standard period of study	Start of program
Master of Arts (MA)	German, English and Spanish	4 semester	Summer and winter semester

Admission requirements

- University degree (German or non-German) in a relevant discipline
- German language proficiency (CEFR level B2)
- English language proficiency (CEFR level B2)
- Spanish language proficiency (CEFR level C1)
- Specific modules with a certain amount of ECTS credits (see examination regulations)



Linguistics

The interdisciplinary master's degree program Linguistics is a joint offer by the German Language and Literature, English Studies, Romance Studies and Intercultural Communication and Multilingualism Studies departments. It is intended for students who have completed a bachelor's degree program in linguistics or philology. The degree program is research-oriented and covers the full spectrum of synchronic and diachronic linguistics.

At the core of the program is the cultivation of students' ability to combine linguistic theory development with empirical methods and apply them across different fields in an interdisciplinary manner. The degree program specifically advances students' ability to independently develop and carry out research projects. The modules are generally offered by all participating philologies. This gives students the possibility to study linguistics beyond the limitations of individual disciplines and languages and regardless of their personal language skills.

The objective of the degree program is to give students access to linguistic research at an international level. Aside from linguistics, the master's degree program opens up prospects in diverse occupational fields such as language instruction and media communication.

+ POSSIBLE LINES OF WORK

Education (adult education, languages courses, educational/vocational institutes (*Bildungswerke*), etc.), cultural management (theater, opera, museums, etc.), journalism/media industry, communications industry (marketing, public relations, translation), book industry (libraries, booksellers, publishers), international cultural relations, tourism, international organizations/ public authorities/ governmental or non-governmental organizations, teaching/research at universities, research institutions, university administration, etc.)

Degree	Language of instruction	Standard period of study	Start of program
Master of Arts (MA)	German	4 semester	Winter semester
Admission requirements			
<ul style="list-style-type: none"> • University degree (German or non-German) in a relevant discipline • German language proficiency (CEFR level C1) • Minimum grade of 3.0 or local equivalent • Specific modules with a certain amount of ECTS credits (see examination regulations) 			



Media Studies

Media Studies is concerned with mediality and its impact on cultural, social and political communication. In this master's degree program, students are trained to competently analyze media, media texts and media systems with a particular focus on the aesthetics, theory, history and analysis of film, television and social media. Moreover, questions from media and cultural studies are investigated primarily with methods from the social sciences, taking into consideration the connections between media and industry, politics and social communication. Students engage in guided independent research, enhancing their receptive and productive skills.

In addition to compulsory modules covering theories and methodologies of media studies as well as the history and historiography of media, this degree program offers practical elements in which students gain insights into media production processes in the areas they choose: audio/radio, film/video, online or photography. These practical experiences are connected with students' theoretical studies of the respective media. Having acquired broad theoretical knowledge as well as methodological and practical skills, and having reflected on questions of interference between media and society, of aesthetics of film and television as well as of media culture, graduates of this program are prepared for a professional activity in a diverse field.

+ POSSIBLE LINES OF WORK

Editorial departments of newspapers/radio stations/television stations/online firms, film industry, publishers and agencies, applied media research, museums, public relations work, corporate communications, cultural institutions, educational institutions, academia (teaching/research at universities, research institutions, etc.)

Degree	Language of instruction	Standard period of study	Start of program
Master of Arts (MA)	German	4 semester	Winter semester
Admission requirements			
<ul style="list-style-type: none"> • University degree (German or non-German) in a relevant discipline • German language proficiency (CEFR level C1) • Minimum grade of 2.5 or local equivalent • Specific modules with a certain amount of ECTS credits (see examination regulations) 			



FACULTY OF ARTS

Medieval Studies

The master's degree program Medieval Studies is built on the insight that, especially in the humanities, knowledge of the Middle Ages is fundamental to a deeper understanding of more modern developments. Thus, the study of medieval history and culture as well as the languages and literatures of the Middle Ages does not merely serve to uncover the various facets of a bygone era but must rather be understood as the study of an epoch that was key to laying the foundation of the modern world.

Being integrated into the research activities of the Bonn Middle Ages Center (Bonner Mittelalterzentrum, BMZ), this degree program offers research-based academic training. The degree program furthermore supports students' own research through collaboration with the Greek and Latin departments, assuring that students will be thoroughly exposed to the central languages of medieval culture. In this manner, students acquire the ability to critically examine the state of research and continue to work on academic questions of medieval studies. In addition, students acquire key competences relevant in this field, such as the ability to independently phrase and solve research problems.

+ POSSIBLE LINES OF WORK

Archiving, publishing, libraries, media (newspapers, trade/professional journals, publishing houses, radio, television, etc.), public relations/press work, teaching at schools, adult education, tourism, museums/cultural institutions, policy consulting, foreign service, academia (teaching/research at universities, research institutions, etc.)

Degree	Language of instruction	Standard period of study	Start of program
Master of Arts (MA)	German	4 semester	Summer and winter semester

Admission requirements

- University degree (German or non-German) in a relevant discipline
- German language proficiency (CEFR level C1)
- Knowledge of Latin worth a minimum of 12 ECTS credits
- Specific modules with a certain amount of ECTS credits (see examination regulations)



North American Studies

The master's degree program North American Studies focuses on research of the United States of America and Canada. It offers an innovative and transdisciplinary environment for research on cultural-analytical theories and methods, transatlantic relations and globalization topics.

This degree program addresses North American literatures and cultures from their colonial beginnings to contemporary literary and cultural practices. Based on the expertise of faculty members and institutional partnerships, the degree program focuses on North American history, politics and economics. Students in this degree program primarily explore questions from the following areas: methodology, modern age, post-modern age, poetry and poetics, gender studies, Afro-American studies, pop cultures as well as overlaps between culture and economics.

The University of Bonn regularly hosts guest researchers, especially from Canada, who also contribute to the lectures and teaching.

+ POSSIBLE LINES OF WORK

Cultural management, language institutes (adult education), journalism/media industry, communications industry (public relations, translation), book industry (libraries, book-sellers, publishers), international cultural relations, marketing, tourism, international organizations/ public authorities/ governmental or non-governmental organizations, academia (research management, teaching/research at universities, research institutions, university administration, etc.)

Degree	Language of instruction	Standard period of study	Start of program
Master of Arts (MA)	English	4 semester	Summer and winter semester

Admission requirements

- University degree (German or non-German) in a relevant discipline
- German language proficiency (CEFR level B2)
- English language proficiency (CEFR level C1)
- Minimum grade of 2.5 or local equivalent or a bachelor's thesis with a minimum grade of 2.0
- Specific modules with a certain amount of ECTS credits (see examination regulations)



DEPARTMENT OF OLD CATHOLIC STUDIES

Old Catholic and Ecumenical Theology

Open to students of all religions, the Old Catholic and Ecumenical Theology degree program offers in-depth insights to Old Catholic theology, relating it to ecumenical theological and interreligious questions. Accordingly, lecturers from Old Catholic, Protestant, Roman Catholic, Orthodox and Anglican theology offer courses at the Department of Old Catholic Studies, which is the only university department of its kind in Germany. The degree program is complemented by courses on the Jewish-Christian and Muslim-Christian dialogue.

A central aspect of this degree program is its practical approach, with contract lecturers working in ecclesiastical and extra-ecclesiastical professions. As an inherent part of the curriculum, the International Old Catholic Theological Conference, which is often held as a joint Anglican and Old Catholic theological conference, is a great opportunity for students to network with theologians from Germany, the United Kingdom, Austria, Switzerland, the Netherlands, Poland and the Czech Republic.

+ POSSIBLE LINES OF WORK

Priest of the German Old Catholic Church (practical training required after master's degree), speaker in ecumenical and (inter)religious fields, academia (research management, teaching/research at universities, research institutions, etc.), journalism (editing at news agencies, radio, television, online, etc.), book sector (archives, libraries, publishers)

Degree	Language of instruction	Standard period of study	Start of program
Master of Arts (MA)	German	4 semester	Winter semester

Admission requirements

- University degree (German or non-German) in theology
- German language proficiency (CEFR level C1)
- Other language skills: Latin, Greek and Hebrew proficiency certificates (each with a minimum grade of "sufficient" (4.0))
- Applicants from outside Germany or another EU country must pass the aptitude test for university studies.



FACULTY OF ARTS

Philosophy

The degree program Philosophy offers a research-oriented environment for students to deepen their knowledge of and specialize in the areas of contemporary philosophy, theoretical and practical philosophy as well as history of philosophy. Students can develop an individual profile within broad thematic areas ranging from (applied) ethics to philosophy of mind and philosophy of language, natural and cultural philosophy, logic and epistemology as well as metaphysics.

Students learn to put their acquired knowledge into the context of current theories and discourses in their fields and to critically question historical positions. Students benefit from a wide diversity and large number of professorships and their interdisciplinary relations, covering the entire spectrum of philosophical teaching and research.

+ POSSIBLE LINES OF WORK

Non-academic ethics institutes, ethics commissions, academia (research management, teaching/research at universities and research institutions), private economy/administration (personnel selection/development, corporate consulting, career/academic counseling), policy consulting, culture management, adult education, journalism (editing at news agencies, radio, television, online), book industry (archives, libraries, publishers), management

Degree	Language of instruction	Standard period of study	Start of program
Master of Arts (MA)	German	4 semester	Summer and winter semester
Admission requirements			
<ul style="list-style-type: none"> • University degree (German or non-German) in a relevant discipline • German language proficiency (CEFR level C1) • Minimum grade of 3.0 or local equivalent • Specific modules with a certain amount of ECTS credits (see examination regulations) 			



Political Science

The master's degree program Political Science reflects the focus of Bonn's political science academics on the political interdependencies between German, European and, ultimately, global politics. The program is built on the University's research tradition, which combines the perspectives of contemporary history, the history of political thought and institutional research with a practice-related analysis of real-world political processes.

The degree program is designed to convey to students in-depth knowledge of the domestic and foreign policy of Germany and other countries of the West (Europe, North America) and Asia, addressing European integration along with the political thought and real-world elements underlying it and the theory and policies driving it. In addition, the degree program gives students thorough insight into political practice, including an internship during which they can practically apply acquired academic competences.

For holders of a degree in political science or a degree with a political science focus, this degree program represents an opportunity to acquire formidable interdisciplinary and practice-related qualifications for work in or related to policy-making.

+ POSSIBLE LINES OF WORK

Journalism, public relations, media/communications industry (advertising, PR), media consulting, parliaments, public authorities, public administration, industry and trade associations, political or other foundations, policy consulting (think tanks, foundations, public affairs agencies), foreign service, international organizations, opinion polling, adult education, private economy, academia (teaching/research at universities, research institutions etc.)

Degree	Language of instruction	Standard period of study	Start of program
Master of Arts (MA)	German	4 semester	Winter semester
Admission requirements			
<ul style="list-style-type: none"> • University degree (German or non-German) in a relevant discipline • German language proficiency (CEFR level C1) • Minimum grade of 2.7 or local equivalent • Specific modules with a certain amount of ECTS credits (see examination regulations) 			



FACULTY OF PROTESTANT THEOLOGY

Protestant Theology

In the Protestant Theology degree program students acquire advanced research-oriented knowledge as well as methodological and analytical competencies in all of the main theological disciplines (Old Testament, New Testament, Church History, Systematic Theology and Practical Theology). Students broaden their knowledge of Christianity as a possibility for humanity to find meaning in life, as a guide to leading one's life and finding values and as an influential factor in western culture and society. In addition, they explore acts of leading in societal and church institutions as well as related conditions and effects.

In particular, students learn how to critically assess phenomena of Christian religion in history and today, conduct independent research and solve complex problems, with a particular focus on the reformational perspective. An important objective in this process is that students acquire key qualifications that are trans-disciplinary and professionally relevant.

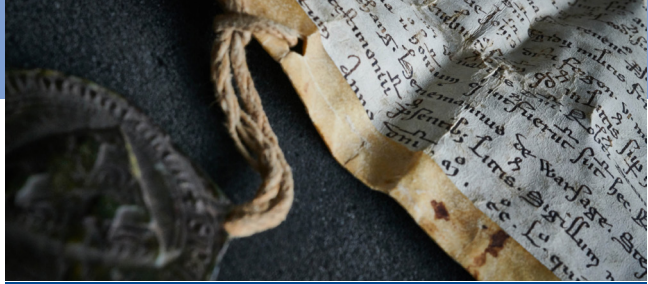
+ POSSIBLE LINES OF WORK

Administrative specialist at facilities for ecumenical research, church welfare and social facilities and institutions in the area of development cooperation, etc.; adult education (church academies, adult education centers, etc.); academia (research management, teaching/research at universities, research institutions, etc.); journalism/editing, public relations, publishing, editing, libraries, archives

Degree	Language of instruction	Standard period of study	Start of program
Master of Arts (MA)	German	4 semester	Summer and winter semester

Admission requirements

- University degree (German or non-German) in a relevant discipline
- German language proficiency (CEFR level C1)
- English language proficiency (CEFR level B2) when English-language modules are taken
- Other language skills: Latin, Greek, Hebrew proficiency certificates
- Specific modules with a certain amount of ECTS credits (see examination regulations)



FACULTY OF ARTS

Provenance Research and History of Collecting

Provenance research is understood to be contextual research across disciplines and historical periods. It reveals the complexity of the values ascribed to art and cultural objects in various societies, social constellations and also by individuals. Thus, the history of private and institutional collecting is closely linked to provenance research.

Rooted in art history, this degree program is offered by the transdisciplinary research unit Provenance Research and Cultural Property Law. Accordingly, this degree program not only features content from the area of art history but also from the area of law, exploring all periods and (extra-)European regions. In addition, the program deepens students' specialized knowledge about the translocation of artworks and cultural goods, the history of collecting and the art market as well as legal questions regarding the art trade and cultural property. Moreover, students acquire the intellectual autonomy to place their acquired knowledge in the context of complex (art) historical and legal questions. Of central importance to this degree program are its practical focus, shaped by diverse practical elements in the curriculum and the cooperation with partner institutions, as well as the possibility for students to develop a specialized profile in the areas of art history, history, museum studies, cultural sociology, post-colonialism, and economics.

+ POSSIBLE LINES OF WORK

Museums/preservation of monuments and historic buildings/art dealing (galleries, auction houses), exhibitions (curator work, guided tours) lending operations), culture (institutions, municipal cultural affairs offices), insurance (appraisals), academia (research management, teaching/research at universities or research facilities), public relations

Degree	Language of instruction	Standard period of study	Start of program
Master of Arts (MA)	German	4 semester	Winter semester
Admission requirements			
<ul style="list-style-type: none"> • University degree (German or non-German) in a relevant discipline • German language proficiency (CEFR level C1) • English (CEFR level B2) and Spanish language proficiency (CEFR level A2) if the supplementary subject "post-colonialism" is chosen • Minimum grade of 2.7 or local equivalent • Specific modules with a certain amount of ECTS credits (see examination regulations) 			



Renaissance Studies

In the international and interdisciplinary master's degree program Renaissance Studies / Studi Rinascimentali at the Universities of Bonn and Florence, students are conveyed extensive knowledge of the culture of the 15th and 16th centuries in the areas of Italian studies, art history and New Latin philology, all of which constitute mandatory modules in Bonn. In Florence, the curriculum also includes mandatory courses in history.

Beyond this core content, students in this degree program can develop profiles according to their individual interests by choosing courses from the areas of Protestant church history, English studies, legal history, theater studies and other European literatures. In most cases, students spend their second or third semester at the partner university and return to their home university in the final semester to write their final thesis. Graduates are awarded a German-Italian double degree.

+ POSSIBLE LINES OF WORK

Research management, education (e.g. adult education at universities), book industry (publishing/ libraries/ translating/ editing), culture (cultural institutions, cultural management, embassies, regional cultural work, exhibitions, etc.), media/journalism (press, radio, television, on-line media, public relations), administration (international relations, e.g. diplomatic service, EU institutions, international organizations), academia (research management, teaching/research at universities, research institutions, etc.)

Degree	Language of instruction	Standard period of study	Start of program
Master of Arts (MA)	German and Italian	4 semester	Summer and winter semester
Admission requirements			
<ul style="list-style-type: none"> • University degree (German or non-German) in a relevant discipline • German language proficiency (CEFR level B2) • Italian language proficiency (CEFR level B2) • Knowledge of Latin equivalent to a minimum of 12 ECTS credits • Specific modules with a certain amount of ECTS credits (see examination regulations) 			



Romance Studies

The research-oriented master's degree program Romance Studies follows up on the bachelor's degree programs in Romance Studies, deepening students' subject knowledge, adding interdisciplinary aspects and expanding their competences in theory and methodology. The main points of emphasis in this degree program are linguistics and literature as well as language practice. Students can choose between six language combinations (French/Italian, French/Spanish, Italian/French, Italian/Spanish, Spanish/French or Spanish/Italian). Content from the fields of linguistics, literature and cultural studies is covered in greater depth and always with a view to the student's chosen languages.

Students learn to put research problems from Romance linguistics and literature into perspective. The political, economic and social structures as well as media landscapes and educational systems in history and today are examined for geographies where the respective languages are spoken. The master's degree program can be completed within the single-subject option or as a major with a minor in art history.

+ POSSIBLE LINES OF WORK

Education (adult education at universities, language courses at adult education centers or educational/vocational institutes (*Bildungswerke*), etc.), book industry (publishing/libraries/translating/editing), culture (cultural institutions, cultural management, embassies, exhibitions, etc.), media/journalism (press, radio, television, on-line media, editing, public relations), administration (international relations, e.g. diplomatic service, EU institutions), teaching at German schools, academia (research management, teaching/research at universities, research institutions, etc.)

Degree	Language of instruction	Standard period of study	Start of program
Master of Arts (MA)	German and French/ Italian/Spanish	4 semester	Summer and winter semester

Admission requirements

- University degree (German or non-German) in a relevant discipline
- German language proficiency (CEFR level C1)
- French, Spanish or Italian language proficiency (CEFR level C1) and a second language proficiency (CEFR level B2 in French, Italian or Spanish)
- Specific modules with a certain amount of ECTS credits (see examination regulations)



FACULTY OF ARTS

Scandinavian Studies

Scandinavian Studies covers the literatures and cultures of the Scandinavian countries from the Middle Ages to the present day, looking at both individual countries and the trans-national Scandinavian region. In Bonn, the main emphasis in this discipline is placed on medieval and recent Scandinavian literature and cultural studies as well as on augmenting students' proficiency in the respective Scandinavian languages (Danish, Swedish and Norwegian). The degree program follows a comparative approach and embraces a pan-Scandinavian perspective. The aim is to understand the (socio-)cultural developments and processes in the Scandinavian countries and especially to retrace the German-Scandinavian cultural transfer both historically and from a current perspective.

In the master's degree program, students systematically deepen their pre-existing subject knowledge and apply it to field-specific research objects. Particular emphasis is placed on conveying intercultural competence with a central focus on the inter-Scandinavian dimension of linguistic, literary and cultural phenomena. Cross-disciplinary modules in German studies and comparative literature allow for an interdisciplinary approach to research questions with a pan-European perspective.

+ POSSIBLE LINES OF WORK

Education (adult education, language courses, educational/vocational institutes (Bildungswerke), etc.), book industry (publishing/libraries/translating/editing), culture (cultural institutions, embassies, exhibitions, etc.), media (press, radio, television, on-line media, journalism, public relations), administration (international relations, e.g. diplomatic service, international organizations), academia (research management, teaching/research at universities, research institutions, etc.)

Degree	Language of instruction	Standard period of study	Start of program
Master of Arts (MA)	German	4 semester	Summer and winter semester

Admission requirements

- University degree (German or non-German) in a relevant discipline
- German language proficiency (CEFR level C1)
- Knowledge of Latin (min. of 12 ECTS credits)
- Minimum grade of 3.0 or local equivalent
- Specific modules with a certain amount of ECTS credits (see examination regulations), this includes language modules for a Scandinavian language



FACULTY OF ARTS

Slavery Studies

Slavery Studies is a research-oriented master's degree program designed for one year of study. The program offers a broad perspective on interdisciplinary research on slavery and slavery-like phenomena in different times and geographies.

The program is aimed at students with a focus on or interest in text-based scholarship, material culture studies and social sciences. It is designed to allow students to learn about slavery and slavery-like phenomena while developing an individual and specialized research profile. Introductory courses provide an overview of the history and variety of these phenomena as well as the methodological and theoretical basis to research them. Courses covering case studies do not only address certain examples in detail but also provide an opportunity for students to apply knowledge from introductory courses to case studies of their interest.

Being part of the Bonn Center for Dependency and Slavery Studies/the Cluster of Excellence „Beyond Slavery and Freedom,“ our master's students benefit from cutting-edge research on slavery and the newly developed concept of “strong asymmetrical dependency” conducted in an interdisciplinary and international environment.

+ POSSIBLE LINES OF WORK

NGOs, policy consulting, development collaboration, academia (research management, teaching/research at universities, research institutions, etc.), editing/publishing, museums, adult education

Studienabschluss	Unterrichtssprache	Regelstudienzeit	Studienbeginn
Master of Arts (M. A.)	English	2 semester	Winter semester
Zugangsvoraussetzungen			
<ul style="list-style-type: none"> • University degree (German or non-German) in a relevant discipline with at least 240 ECTS • English language proficiency (CEFR level C1) • Minimum grade of 2.5 or local equivalent 			





FACULTY OF ARTS

Sociology

Knowledge of society and culture, interaction and organization is a key requirement in today's world for the development of personal and professional competences. The interdisciplinary master's degree program Sociology offers both a strong research focus and a variety of practical elements for students to develop an individual profile through specialization in particular areas. The degree program is built on a cooperation between the University of Bonn's Sociology department, the Käthe Hamburger Center for Advanced Study in the Humanities „Law as Culture” and the Forum Internationale Wissenschaft, all of which offer their own profile modules.

In addition to a thorough education in sociological theory and empirical research methodology, the program offers profile options in four thematic areas (Empirical Research Methods, Socioprudence in Organizations, Globalization and Development), which students learn through internships that are oriented towards specific professional competences. Moreover, students have the possibility to extend their knowledge beyond their own discipline, either in a particular specialized field (Subfields of Sociology, Political Science, Geography, Evaluation and Quality Assurance, Grief Counseling at Work) or with regard to particular geographic regions (Oriental and Asian Studies, Latin America, Eastern Europe).

Graduates of this degree program are prepared to assume management positions at national or international companies, public authorities, industry and trade associations, media companies or academic research institutions.

+ POSSIBLE LINES OF WORK

Journalism, public relations, media/communications industry (advertising, PR), media consulting, parliaments, public authorities, public administration, industry and trade associations, political or other foundations, policy consulting (think tanks, foundations, public affairs agencies), foreign service, international organizations, opinion polling, adult education, private economy, academia (teaching/research at universities, research institutions etc.)

Degree	Language of instruction	Standard period of study	Start of program
Master of Arts (MA)	German	4 semester	Winter semester
Admission requirements			
<ul style="list-style-type: none"> • University degree (German or non-German) in a relevant discipline • German language proficiency (CEFR level C1) • Minimum grade of 2.7 or local equivalent • Specific modules with a certain amount of ECTS credits (see examination regulations) 			



Spanish Culture and European Identity

The master's degree program Spanish Culture and European Identity was developed in cooperation with the Universidad de León. It is a bi-national degree program that is unique in both Germany and Spain in terms of its specific combination of Romance studies, Spanish studies and European intellectual history. Students gain extensive knowledge of the origins and dissemination of Spanish and European culture, from their roots in antiquity to the indelible influences of the Christian, Jewish and Arabic cultures of the Middle Ages up to its dissemination in Latin America.

During the integrated year abroad in León, students not only expand their academic knowledge but also acquire significant intercultural competences. Graduates of this degree program receive a double degree. The program is directed at graduates from a bachelor's degree program in Romance Studies with focus on Hispanic Studies or in Latin American and Ancient American Studies.

+ POSSIBLE LINES OF WORK

Research management, education (e.g. adult education at universities, language courses at adult education centers, educational/vocational institutes (Bildungswerke), etc.), book industry (publishing/ libraries/ translating/editing), culture (cultural institutions, cultural management, embassies, Goethe Institutes, cultural institutes, regional cultural work, exhibitions, etc.), media/journalism (press, radio, television, on-line media, public relations), administration (international relations, e.g. diplomatic service, EU institutions, international organizations), teaching in the German public school system, academia (research management, teaching/research at universities, research institutions, etc.)

Degree	Language of instruction	Standard period of study	Start of program
Master of Arts (MA)	German and Spanish	4 semester	Summer and winter semester
Admission requirements			
<ul style="list-style-type: none"> • University degree (German or non-German) in a relevant discipline • German language proficiency (CEFR level B2) • Spanish language proficiency (CEFR level C1) • Specific modules with a certain amount of ECTS credits (see examination regulations) 			



Transcultural Studies/Cultural Anthropology

The master's degree program Transcultural Studies/Cultural Anthropology focuses on local and transnational cultural processes in Europe, Latin America and Southeast Asia from both a historical and a contemporary perspective. Students expand knowledge gained from the empirical cultural analysis of day-to-day life in globalized societies and learn to apply ethnographical and historical methods on the basis of insights from cultural theory. Students learn to independently explore and research geographic regions with their complex local systems and cultural diversity against the backdrop of supranational, translocal and global networks. Moreover, they learn to resolve questions concerning processes and performances in the culture of everyday life in an analytical and interdisciplinary manner as well as to adequately prepare their research results for a broader audience.

Key characteristics of this degree program are its practical approach (e.g. close collaboration with regional museums, student research project) and students' freedom to develop their own specialized profiles.

+ POSSIBLE LINES OF WORK

Exhibitions, (curator work, guided tours, lending operations), museums/preservation of monuments and historic buildings/art dealing (galleries, auction houses), culture (administrative specialist e.g. in cultural institutions or municipal cultural affairs offices, internationally active organizations and companies (foundations, public authorities, non-governmental organizations, tourism industry), development collaboration, public relations, adult education, academia (research management, teaching/research at universities, research institutions, etc.), media/publishing

Degree	Language of instruction	Standard period of study	Start of program
Master of Arts (MA)	German and English	4 semester	Summer and winter semester

Admission requirements

- University degree (German or non-German) in a relevant discipline
- German language proficiency (CEFR level C1)
- English language proficiency (CEFR level B2)
- Specific modules with a certain amount of ECTS credits (see examination regulations)



FACULTY OF ARTS

Transnational European and East Asian Culture and History - TEACH

The aim of the master's degree program Transnational European and East Asian Culture and History (TEACH) is to provide students with solid cultural knowledge as well as language and methodological skills for comparative cultural research and work on both international and transnational levels in Europe and East Asia. Upon graduation, students are awarded a master's degree from the University of Bonn and a second master's degree from the Japanese or Korean partner university. Students must therefore spend one semester each in Japan and Korea as part of this degree program.

The master's degree program builds on language and methodological knowledge and skills acquired in a Japan- or Korea-related bachelor's degree program. These competences are applied to a second country—Korea for students of Japanese studies, Japan for students of Korean studies—and complemented by a European perspective.

+ POSSIBLE LINES OF WORK

Intercultural communication, intercultural management, international development cooperation, peace and conflict research, international educational work (adult education, language courses, etc.), politics (policy consulting), culture (conservation/maintenance/management of global cultural heritage, cultural institutions, culture management, museums, etc.), tourism (long-distance, educational and cultural tourism), journalism, academia (teaching/research at universities, research institutions, etc.)

Degree	Language of instruction	Standard period of study	Start of program
Master of Arts (MA)	German and English	4 semester	Winter semester
Admission requirements			
<ul style="list-style-type: none"> • University degree (German or non-German) in a relevant discipline • German language proficiency (CEFR level C1) • English language proficiency (CEFR level B2) • Minimum grade of 2.5 or local equivalent • Knowledge in Japanese or Korean language worth a minimum of 60 ECTS credits 			

- 
- Agricultural and Food Economics
 - Agricultural Sciences and Resource Management in the Tropics and Subtropics
 - Animal Sciences
 - Astrophysics
 - Biochemistry
 - Chemistry
 - Computer Science
 - Crop Sciences
 - Drug Research
 - Economics
 - Geochemistry/Petrology
 - Geodesy and Geoinformation
 - Geodetic Engineering
 - Geography
 - Geography of Environmental Risks and Human Security
 - Geology
 - Immunobiology: from Molecules to Integrative Systems
 - Life Science Informatics
 - Mathematics
 - Medical Immunosciences and Infection
 - Microbiology
 - Molecular Cell Biology
 - Molecular Food Technology
 - Nature Conservation and Landscape Ecology
 - Neurosciences
 - Nutrition Sciences
 - Organismic Biology, Evolutionary Biology and Paleobiology (OEP Biology)
 - Paleontology
 - Physics
 - Physics of the Earth and Atmosphere
 - Plant Sciences
 - Psychology

Master of Science (MSc)



Agricultural and Food Economics

How can a competitive and sustainable agri-food sector help preserve natural resources? The field of agricultural economics answers this question among others, and respective expertise will be very much needed in the future when facing the challenges of a growing population, increasing land use conflicts, changing consumer behavior and progressing climate change.

The Master of Science degree program in Agricultural and Food Economics (AFECO) at the University of Bonn provides students with the necessary skills and knowledge to analyze and further develop economic activities. This includes examining associated policies along the entire food value chain, i.e. from farming to processing, trade and consumption.

Active learning through participation in research projects is an integral part of the curriculum. Students in this international degree program benefit from excellent teaching that qualifies graduates for diverse managing roles in private businesses, public administration and research institutions.

+ POSSIBLE LINES OF WORK

Consultancies and insurers, private businesses, associations, non-profit organizations, agricultural and food authorities, environmental protection, development cooperation

Degree	Language of instruction	Standard period of study	Start of program
Master of Science (MSc)	English	4 semester	Summer and winter semester

Admission requirements

- University degree (German or non-German) in a relevant discipline
- English language proficiency (CEFR level B2)
- Minimum grade of 2.5 or local equivalent
- Specific modules with a certain amount of ECTS credits (see examination regulations)
- Applicants from outside Germany or another EU country must pass the aptitude test for university studies.



FACULTY OF AGRICULTURE

Agricultural Sciences and Resource Management in the Tropics and Subtropics

The master's degree program in Agricultural Sciences and Resource Management in the Tropics and Subtropics is based on a multidisciplinary approach that covers agricultural and ecological issues as well as social, economic and political contexts. The degree program focuses on the basic and applied management of natural resources for agricultural research and development in tropical and subtropical regions. In the course of the degree program, students develop a holistic, interdisciplinary understanding of the structure, use, interaction and management of natural resources while also becoming familiar with a systematic perspective on resource management. In addition to lectures and interactive seminars on modern questions of resource management, students are offered practical training in methodology and research technologies as well as practical field experience in (sub)tropical regions.

Graduates have the ability to identify and solve challenges and problems of (sub)tropical resource management, qualifying for a variety of high-profile positions in agriculture as well as ecological research and development.

+ POSSIBLE LINES OF WORK

Research and teaching, development cooperation, environmental protection, associations, non-profit organizations, agricultural and food authorities

Degree	Language of instruction	Standard period of study	Start of program
Master of Science (MSc)	English	4 semester	Summer and winter semester
Admission requirements			
<ul style="list-style-type: none"> • University degree (German or non-German) in a relevant discipline • English language proficiency (CEFR level B2) 			



FACULTY OF AGRICULTURE

Animal Sciences

The master's degree program Animal Sciences focuses on the production of animal source foods in Germany and abroad with a view to animal, resource and environmental protection. The program addresses questions of nutrition, breeding and production technology as well as disease prevention and the quality of animal source foods. Further important aspects of this degree program are animal welfare and animal health.

Building on the content of the University of Bonn's Agricultural Sciences bachelor's degree program, students deepen their understanding in the areas of animal nutrition, animal breeding, animal husbandry and animal health. Moreover, students learn to conduct independent and innovative research, to independently apply methods, techniques and strategies as well as to refine them with regard to existing problems.

+ POSSIBLE LINES OF WORK

Research and teaching in Germany or internationally (universities, institutes of technology, non-university research institutions), position of responsibility at research and development laboratories in the food and agricultural industry, management position in production, product development and technology of companies, position of responsibility at a technology company, corporate management (of specific divisions/sub-divisions), marketing, consulting, public administration, services companies, trade or industrial associations, media, German and international organizations

Degree	Language of instruction	Standard period of study	Start of program
Master of Science (MSc)	German	4 semester	Summer and winter semester
Admission requirements			
<ul style="list-style-type: none"> • University degree (German or non-German) in a relevant discipline • German language proficiency (CEFR level C1) • English language proficiency (CEFR level B2) 			



FACULTY OF MATHEMATICS AND NATURAL SCIENCES

Astrophysics

Students in the Astrophysics master's degree program learn how to approach astrophysical problems and apply research methods to solve these problems, transcending the existing state of knowledge if necessary. Engaging with interdisciplinary questions, students are furthermore enabled to identify cross-disciplinary interrelations, applying research methods and findings in an independent, responsible and self-critical way.

In addition to courses covering the (astro)physical properties of the basic elements forming our universe (stars, interstellar medium, galaxies and cosmology), the degree program includes a lab course with experiments on modern questions of physics. The curriculum is complemented by a large variety of electives that cover the entire range of astrophysical research. The focus of these electives is aligned with the work of University of Bonn and Max Planck Institute for Radio Astronomy researchers, covering star formation, star development, supernovae, compact objects such as microquasars, neutron stars and pulsars, black holes, interstellar medium, star clusters, galaxies, active galactic cores (such as quasars), galaxy clusters, cosmology, large-scale structure of the universe, gravitational lenses and sky surveys in different frequency ranges (radio/X-ray astronomy and optical astronomy). Through the Bonn-Cologne Graduate School, students can also attend courses at the University of Cologne.

+ POSSIBLE LINES OF WORK

Education and research (e.g. universities, observatories, etc.), service sector, machine and device engineering, microelectronics, energy technology, software development, scientific journalism

Degree	Language of instruction	Standard period of study	Start of program
Master of Science (MSc)	English	4 semester	Summer and winter semester
Zugangsvoraussetzungen			
<ul style="list-style-type: none"> • University degree (German or non-German) in a relevant discipline • English language proficiency (CEFR level B2) • Specific modules with a certain amount of ECTS credits (see examination regulations) 			



FACULTY OF MATHEMATICS AND NATURAL SCIENCES

Biochemistry

Combining the fields of chemistry, biology, physiology and biophysics, biochemistry explores the molecules of life and forms the basis for all life sciences. Biochemistry is both about the analysis of biochemical systems and the reconstruction of biological systems through synthetic biochemistry. Based on state-of-the-art biochemical research, students in the Biochemistry master's degree program receive theoretical and practical training in the key areas of biochemistry through lecture series, methodology courses and lab rotations at the University of Bonn and at partner institutions. In addition, students acquire in-depth knowledge about the chemical biology of nucleic acids, lipids, lipidomics and metabolomics, biophysics of membrane proteins as well as the biochemical basis of neurophysiology, using state-of-the-art technologies and methods and being supervised by experienced and internationally renowned scientists. This degree program offers access to a strong research environment both at the University of Bonn (focusing on immunology and metabolic processes) and other Bonn-based research institutions.

+ POSSIBLE LINES OF WORK

Biochemical foundational research (Max Planck Institutes, large research facilities, etc.), development/production/marketing (industry), molecular diagnostics (medical, biotechnological, environmental, forensic questions), clinical disciplines (pediatrics, human genetics, internal medicine, etc.), academia (teaching/research at universities, research institutions, etc.)

Degree	Language of instruction	Standard period of study	Start of program
Master of Science (MSc)	English	4 semester	Winter semester

Admission requirements

- University degree (German or non-German) in a relevant discipline
- English language proficiency (CEFR level B2)
- Applicants from outside Germany or another EU country must pass the aptitude test for university studies.



FACULTY OF MATHEMATICS AND NATURAL SCIENCES

Chemistry

The Chemistry master's degree program aims at enabling students to independently solve complex problems that go beyond their individual knowledge, using a large variety of scientific methods that are taught in the course of the degree program. The degree program has a strong research focus. Research activities at the Chemistry Department touch different areas of chemistry, ranging from fundamental research (e.g. element-metal multiple bonds, reaction paths) to applied research (e.g. sensors, catalysis).

The Chemistry master's degree program is primarily directed at students who have already obtained a Bachelor of Science degree in chemistry. Students who have graduated from a bachelor's degree program in another field may also be admitted provided they meet all relevant requirements.

+ POSSIBLE LINES OF WORK

Research, product development and quality management; risk assessment and safety management; analysis, development and programming of technological systems and chemical processes; patenting; pharmaceutical industry; oil industry

Degree	Language of instruction	Standard period of study	Start of program
Master of Science (MSc)	English	4 semester	Summer and winter semester
Admission requirements			
<ul style="list-style-type: none"> • University degree (German or non-German) in a relevant discipline • English language proficiency (CEFR level B2) • Minimum grade of 2.9 or local equivalent • Specific modules with a certain amount of ECTS credits (see examination regulations) 			



FACULTY OF MATHEMATICS AND NATURAL SCIENCES

Computer Science

The Computer Science master's degree program explores the theoretical modeling of real problems through algorithms as well as their application. Theoretical computer science delivers the necessary fundamentals, asking how and to which extent of complexity a problem can be described using algorithms, while practical computer science develops methods and concepts to solve these problems. Technical computer science meanwhile focuses on fundamental characteristics of hardware, with application and realization being subject to the field of applied computer science.

An example of a practical field of application could be the automotive sector, where intelligent routing and steering systems of vehicles would be unimaginable without the use of complex software. In robotics, intricate programming is likewise required to mimic human skills and enable autonomous decisions.

Students in this master's degree program can specialize in one of the following research areas: Algorithmics, Graphics/Vision/Audio, Information and Communication Management, or Intelligent Systems.

+ POSSIBLE LINES OF WORK

Production/development of IT systems (computer design, development of operating systems and user interfaces), positions in trade/consulting (system/application programming, IT organization, system support, training), positions with users (administration, maintenance/expansion of IT and programming systems, training/support), teaching, academia (teaching/research at universities, research institutions, etc.)

Degree	Language of instruction	Standard period of study	Start of program
Master of Science (MSc)	English	4 semester	Summer and winter semester

Admission requirements

- University degree (German or non-German) in a relevant discipline
- English language proficiency (CEFR level B2)
- Specific modules with a certain amount of ECTS credits (see examination regulations)
- Applicants from outside Germany or another EU country must pass the aptitude test for university studies.



FACULTY OF AGRICULTURE

Crop Sciences

The Master of Science program Crop Science covers basic aspects of the production of high-quality plant-based feeds, foods and renewable raw materials, exploring the larger picture of how these aspects fit together on both the national and international level. This is a research-oriented degree program that aims to provide students with in-depth knowledge, theoretical and methodological competence and knowledge of the processes needed to conduct autonomous and innovative research in crop science (food, feed and resources). An overarching priority of this degree program is that students learn to critically assess scientific findings as well as act responsibly in agricultural occupations.

Thematic priorities in Bonn include the general ecological and production-technological environment as well as resource conservation in the production of plant-based food, feed and renewable raw materials. Other focus areas of this degree program are molecular aspects of crop science and sensor-based recognition of plant and soil conditions as the basis for plant breeding measures or precision crop production.

+ POSSIBLE LINES OF WORK

Research and teaching in Germany or internationally, a position of responsibility at a research and development laboratory in the agriculture and food industry, a management position in production, product development and technology of companies, a position of responsibility at a technology company, corporate management (of specific divisions/sub-divisions), marketing, consulting

Degree	Language of instruction	Standard period of study	Start of program
Master of Science (MSc)	German and English	4 semester	Winter semester
Admission requirements			
<ul style="list-style-type: none"> • University degree (German or non-German) in a relevant discipline • German language proficiency (CEFR level C1) • English language proficiency (CEFR level B2) 			



Drug Research

With its curriculum strongly oriented towards research, this master's degree program conveys extensive knowledge in the field of drug research in alignment with current research projects. Independently working on scientific problems and tasks, students acquire the necessary skillset for research activities in the pharmaceutical field, especially in the pharmaceutical and pharma-related industry or at drug research institutions.

Upon application, students choose one of the following seven specialties: Pharmaceutical/Medical Chemistry, Pharmaceutical Biomedicine, Pharmaceutical Biology, Pharmaceutical Technology, Pharmacology and Toxicology, Clinical Pharmacy or Pharmaceutical Microbiology.

+ POSSIBLE LINES OF WORK

Drug research and development in the pharmaceutical industry, positions at drug research facilities and drug monitoring authorities, research and teaching at universities and other research institutions.

Degree	Language of instruction	Standard period of study	Start of program
Master of Science (MSc)	German and English	4 semester	Summer and winter semester

Admission requirements

- University degree (German or non-German) in a relevant discipline
- German language proficiency (CEFR level C1) + English language proficiency (CEFR level B2)
- Applicants from outside Germany or another EU country must pass the aptitude test for university studies.
- Specific modules with a certain amount of ECTS credits (see examination regulations)



FACULTY OF LAW AND ECONOMICS

Economics

The master's degree program Economics, which is taught in English, conveys to students the analytical and methodological knowledge, models, and problem-solving approaches for key societal challenges. The program is theoretically well-grounded, research-oriented, and covers all content areas of economics. It provides students with advanced knowledge of mathematics, statistics, econometrics and other relevant fields, enabling them to understand complex economic models and judge the relevance and limitations of economic theories. Students are successively introduced to current topics and debates in economic research and have the opportunity to apply their knowledge to a broad spectrum of economic topics.

The contents and methodologies of this degree program are deliberately oriented towards the future, addressing among others changes in markets driven by digitalization and internationalization. Students build solid and advanced knowledge of the core areas of macro- and microeconomics, financial economics and econometrics. In addition, students are gradually introduced to the latest research through research seminars in which they discuss new research results and work on their own research projects.

+ POSSIBLE LINES OF WORK

Administration (public service, professional/industry associations), financial planning/management, labor/social sector, auditing, tax consulting, corporate consulting, banks, insurance companies, non-profit organizations/non-governmental organizations (NGOs), media industry/business journalism, academia (teaching/research at universities, research institutions, etc.)

Degree	Language of instruction	Standard period of study	Start of program
Master of Science (MSc)	English	4 semester	Winter semester
Admission requirements			
<ul style="list-style-type: none"> • University degree (German or non-German) in a relevant discipline • English language proficiency (CEFR level B2) • Minimum grade of 2.3 or local equivalent • Specific modules with a certain amount of ECTS credits (see examination regulations) 			



FACULTY OF MATHEMATICS AND NATURAL SCIENCES

Geochemistry/Petrology

The research focus of the Geochemistry/Petrology degree program lies on Earth's endogenous processes. Central importance is ascribed to the development of the planet from its origins to continental drift and current volcanic activity.

To enable students of Geochemistry/Petrology to achieve a discipline-specific qualification for their continuing careers, modules with the following methodological points of emphasis are offered: Geochemistry, Petrology and Mineralogy/Crystallography. Through their choices and priorities set within the broad spectrum of this discipline, students can create individual degree profiles to match their personal interests, abilities and professional plans. The degree program includes a small range of compulsory modules that is common to all three geosciences master's degree programs (Paleontology, Geology and Geochemistry/Petrology). These joint courses promote the scientific exchange of ideas among students. In addition, students gain an overview of different work methods in the various specialized areas of geosciences, which opens up the prospect of interdisciplinary projects.

+ POSSIBLE LINES OF WORK

Applied geology (groundwater resources, development collaboration, environmental protection, georisks), ministries and government offices (environment area), geological services, raw materials exploration/use and production materials (industrial sector), public relations, museums, (teaching/research at universities, research institutions, etc.)

Degree	Language of instruction	Standard period of study	Start of program
Master of Science (MSc)	German and English	4 semester	Summer and winter semester
Admission requirements			
<ul style="list-style-type: none"> • University degree (German or non-German) in a relevant discipline • German language proficiency (CEFR level C1) • English language proficiency (CEFR level B2) • Minimum grade of 2.5 or local equivalent 			



FACULTY OF AGRICULTURE

Geodesy and Geoinformation

Geodesy is concerned with the measurement of the Earth in global, regional and local scales. Geoinformation in turn establishes links between the captured data and their geographic location, processing the data with computer-aided techniques and presenting them with digital geoinformation systems.

In the initial phase of the master's degree program, students build on existing knowledge in advanced modules in four areas: Global Monitoring, Geodetic Optimization and Multisensor Systems, Photogrammetry and Geoinformation Systems as well as Urban Renewal and Reconstruction. These modules are designed to provide students with an initial overview of the individual specialized fields, enabling them to identify individual areas of interest. Later on in the program, students can deepen their understanding of more specialized topics by choosing from a range of elective, block and project modules. Thanks to the research-oriented structure of the degree program, students are prepared for work as engineers at commercial enterprises, administrative authorities or in research. The goal is to convey to students advanced mathematical, methodological and technical abilities that correspond to current research topics in the fields of geodesy and geoinformation. A master's degree is also a prerequisite for acceptance to the probationary training period (*Referendariat*) for higher public surveying (*höherer vermessungstechnischer Verwaltungsdienst*).

+ POSSIBLE LINES OF WORK

Managerial positions in public surveying (land registries, regional land survey offices), publicly appointed survey engineer, commercial engineering firms, companies involved with geoinformation, transportation, cartography, photogrammetry, power supply, etc., banking/real estate, construction, technical expert firms/planning offices, real estate departments of large companies, municipalities/ specialized administrations, aerospace, software development, academia (teaching/research at universities, research institutions, etc.)

Degree	Language of instruction	Standard period of study	Start of program
Master of Science (MSc)	German and English	4 semester	Winter semester
Admission requirements			
<ul style="list-style-type: none"> • University degree (German or non-German) in a relevant discipline • German language proficiency (CEFR level C1) • English language proficiency (CEFR level B1) 			



Geodetic Engineering

The master's degree program Geodetic Engineering is intended for students with a first academic degree in the field of geodesy and geoinformation or related fields such as computer science, mathematics, physics, geosciences or electrical engineering. In the initial phase of the program, modules are designed to close knowledge gaps. The program then offers three profiles for students to deepen their understanding of a specific area. The profiles reflect the research priorities of the geodetic institutes: Mobile Sensorics and Robotics, Geodetic Earth System Sciences and Data Analysis as well as Geodetic Information and Spatial Development.

This degree program conveys to students the skills and tools needed to recognize geodetic engineering problems, phrase research questions for those problems and solve them in projects. In the course of the program, students have the opportunity to take active part in research projects, which can also be an initial qualification for a doctorate. The program provides students with scientifically sound specialized knowledge and equips them with the skills and methods needed to work in the industrial sector, in research and at administrative authorities.

+ POSSIBLE LINES OF WORK

Managerial positions in public surveying administrations (land registries, regional land survey offices), publicly appointed survey engineer, commercial engineering firms, companies involved with geoinformation, transportation, cartography, photogrammetry, power supply, etc., banking/real estate, construction, technical expert firms/planning offices, real estate departments of large companies, municipalities/ specialized administrations, aerospace, software development, academia (teaching/research at universities, research institutions, etc.)

Degree	Language of instruction	Standard period of study	Start of program
Master of Science (MSc)	English	4 semester	Winter semester
Admission requirements			
<ul style="list-style-type: none"> • University degree (German or non-German) in a relevant discipline • English language proficiency (CEFR level B2) • Specific modules with a certain amount of ECTS credits (see examination regulations) 			



FACULTY OF MATHEMATICS AND NATURAL SCIENCES

Geography

The interdisciplinary focus of geography, a field which lies between the natural and social sciences, is reflected in the diversity of this degree program's range of contents. Geography describes, explains and shapes spatial structures and processes, and aids in finding strategies to solve environmentally and socially relevant problems both locally and globally.

What sets Bonn's Geography master's degree program apart is that specialization is possible but not a requirement. The focus of this degree program can be set individually, allowing for a very specialized or a more general approach when shaping one's curriculum according to personal interests and the range of courses. Students who wish to specialize can choose one of four fields: Development and Globalization, Governance & Space, Changing Environmental Systems and Water in Global Change.

There are no minors in the master's degree program, but modules in other subjects can be taken for additional credit.

+ POSSIBLE LINES OF WORK

Development collaboration, geographic information systems (GIS), market/opinion research, consulting, natural hazard management, nature/environmental protection, public relations/media, spatial/landscape planning, transport planning and transport infrastructure planning, urban planning/development, academia (research management, teaching/research at universities, research institutions, etc.)

Degree	Language of instruction	Standard period of study	Start of program
Master of Science (MSc)	German and English	4 semester	Winter semester
Admission requirements			
<ul style="list-style-type: none"> • University degree (German or non-German) in a relevant discipline • German language proficiency (CEFR level C1) • English language proficiency (CEFR level B2) • Minimum grade of 2.5 or local equivalent 			



FACULTY OF MATHEMATICS AND NATURAL SCIENCES

Geography of Environmental Risks and Human Security

The master's degree program Geography of Environmental Risks and Human Security, which is taught in English, is a joint degree program offered by the Department of Geography of the University of Bonn and the Institute for Environment and Human Security of United Nations University. The program explores the complex interrelationships between environmental risks and human security as well as their impact on the interactions between humans and their environment (vulnerability, resilience, adaptation).

This interdisciplinary and research-oriented degree program combines theory and its application in an international setting. In the initial phase of the program, students build comprehensive knowledge of and critically reflect on relevant theoretical and methodological debates from the perspectives of both human geography and earth system sciences. On this basis, students are introduced to various politically relevant areas (sustainability goals, adaptation to climate change, disaster management and risk governance, humanitarian aid), which are critically discussed using examples. While research seminars promote students' scientific independence in these thematic areas, the more practice-oriented courses and a mandatory internship give them the opportunity to gain insight into concrete work methods and institutions operating at the interface between scientific theory and practice.

+ POSSIBLE LINES OF WORK

Work in the areas of international collaboration, climate change research, disaster management, humanitarian aid, spatial planning and sustainability policy at international organizations, German federal authorities and private companies, research/teaching at academic or non-academic research institutions.

Degree	Language of instruction	Standard period of study	Start of program
Master of Science (MSc)	English	4 semester	Winter semester
Admission requirements			
<ul style="list-style-type: none"> • University degree (German or non-German) in a relevant discipline • English language proficiency (CEFR level B2) • Minimum grade of 2.5 or local equivalent • Specific modules with a certain amount of ECTS credits (see examination regulations) 			



FACULTY OF MATHEMATICS AND NATURAL SCIENCES

Geology

Geology is a research-oriented master's degree program that features a high share of practical field, laboratory and computer-assisted work. By gathering practical experience and theoretical knowledge, students grow professionally and develop the necessary process understanding to pursue a professional career in this field.

The master's degree program Geology focuses on exogenous processes of the Earth and offers a wide range of courses with the following points of emphasis: General Geology, Applied Geology, Hydrogeology, Environmental Geology, Geological Risks, Sedimentology and Structural Geology. Through their choices and the priorities they set within the broad spectrum of this discipline, students can create individual degree profiles to match their personal interests, abilities and professional plans. The degree program includes a small group of compulsory modules that is common to all three geosciences master's degree programs (Paleontology, Geology and Geochemistry/Petrology). These joint courses promote the scientific exchange of ideas among students. In addition, students gain an overview of the different work methods in the various specialized areas of geosciences, which opens up the prospect of interdisciplinary projects.

+ POSSIBLE LINES OF WORK

Applied geology (groundwater resources, development collaboration, environmental protection, georisks), ministries and government offices (environmental protection), geological services, raw materials exploration/use and production materials (industrial sector), public relations, museums, academia (teaching/research at universities, research institutions, etc.)

Degree	Language of instruction	Standard period of study	Start of program
Master of Science (MSc)	German and English	4 semester	Summer and winter semester
Admission requirements			
<ul style="list-style-type: none"> • University degree (German or non-German) in a relevant discipline • German language proficiency (CEFR level C1) • English language proficiency (CEFR level B2) • Minimum grade of 2.5 or local equivalent 			



FACULTY OF MATHEMATICS AND NATURAL SCIENCES

Immunobiology: from Molecules to Integrative Systems

Immune system research is the key to understanding the molecular causes of many diseases. This is not only true for bacterial and viral infections, but also for diseases such as cancer, Alzheimer's and cardiovascular and metabolic disorders. Immunobiology is a systems science. The functions of our most important defense mechanisms against pathogens at the molecular or atomic level can only be understood through intact organs in a living organism.

In the master's degree program Immunobiology: from Molecules to Integrative Systems, students gain insight into model organisms and in-vitro approaches to exploring the immune system and its important cells. By visualizing molecules in living cells and isolating relevant protein complexes, intra-cellular signaling pathways become visible. Applying systems approaches in the fields of functional genomics, epigenetics and sophisticated bioinformatics, students investigate the complex regulation and communication in the immune system. The objective is for students to understand the elaborate work mechanisms of the immune system as a whole and what went wrong in the case of disease.

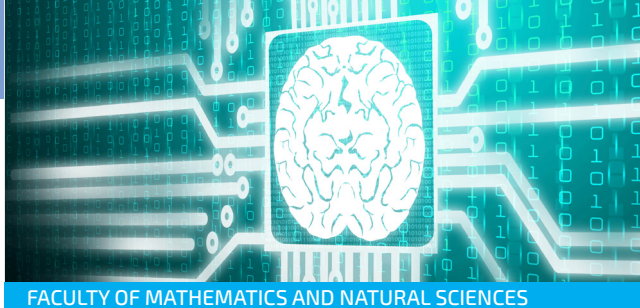
+ POSSIBLE LINES OF WORK

Biomedical basic research (Max Planck Institutes, large research facilities, etc.), development/production/marketing (industrial sector), molecular diagnostics (for medical, biotechnological, environmental, forensic questions; in clinical disciplines (e.g. pediatrics, human genetics, internal medicine, etc.), academia (teaching/research at universities, research institutions, etc.)

Degree	Language of instruction	Standard period of study	Start of program
Master of Science (MSc)	English	4 semester	Winter semester

Admission requirements

- University degree (German or non-German) in a relevant discipline
- English language proficiency (CEFR level B2)
- Specific modules with a certain amount of ECTS credits (see examination regulations)
- Applicants from outside Germany or another EU country must pass the aptitude test for university studies.



Life Science Informatics

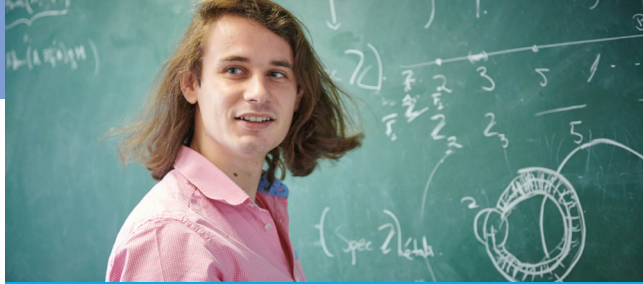
The interdisciplinary master's degree program Life Science Informatics is designed to enable graduates to successfully meet the technical and economic challenges at the interface between biotechnology, medicine, pharmacy and informatics. The program focuses on conveying skills and competencies from the natural sciences and information technology while also integrating academic research and teaching. The program consists of four main areas: Informatics and Mathematics for Natural Scientists, Basic Life Science Informatics, Chemoinformatics and Computer-Aided Design of Active Ingredients as well as Cell and System Biology .

Within these areas, topics covered include biomedical database systems, data mining and machine learning, statistical genetics, chemoinformatics, medical imaging, computer-aided disease modeling, algorithmic bioinformatics and system biology. The practical relevance of this program is assured by its high percentage of research laboratory modules, which are embedded in both basic and applied research at participating Fraunhofer Institutes for Applied Information Technology (FIT) and for Algorithms and Scientific Computing (SCAI) in collaboration with regional industrial enterprises.

+ POSSIBLE LINES OF WORK

Scientific research, quality assurance and quality management, process and product development, pharmaceutical consulting and distribution, laboratory analysis, providing expert opinion, IT quality assurance and development, IT application consulting and distribution

Degree	Language of instruction	Standard period of study	Start of program
Master of Science (MSc)	English	4 semester	Winter semester
Admission requirements			
<ul style="list-style-type: none"> • University degree (German or non-German) in a relevant discipline • English language proficiency (CEFR level B2) 			



FACULTY OF MATHEMATICS AND NATURAL SCIENCES

Mathematics

In the master's degree program Mathematics students can acquire comprehensive scientific knowledge in a key area of mathematics. They can choose from the following areas: "Algebra, Number Theory and Logic", "Mathematical Analysis and Differential Equations", "Discrete Mathematics", "Geometry and Topology", "Numerical Analysis and Scientific Computing" and "Probability Theory and Stochastic Analysis."

In addition to introductory lecture modules, students of this degree program have the possibility to directly attend advanced master's level lectures in other mathematical areas. Different topics from mathematics are furthermore presented in special graduate seminars. Students can gather practical experience e.g. from practical tutoring, internships in the industrial sector or programming projects. Those interested in the application of mathematics in other scientific fields can also choose modules from a secondary subject.

+ POSSIBLE LINES OF WORK

Insurance industry, banking, IT, financial/personnel services firms, corporate consultants, industrial research and development (e.g. automotive industry/energy sector/medtech and biotech), logistics, academia (teaching/research at universities, research institutions, etc.)

Degree	Language of instruction	Standard period of study	Start of program
Master of Science (MSc)	English	4 semester	Summer and winter semester

Admission requirements

- University degree (German or non-German) in a relevant discipline
- English language proficiency (CEFR level B2)
- Minimum grade of 2.5 or local equivalent
- Specific modules with a certain amount of ECTS credits (see examination regulations)
- Applicants from outside Germany or another EU country must pass the aptitude test for university studies.



FACULTY OF MEDICINE

Medical Immunosciences and Infection

Immunology as a key to improving health—that's the driving force behind exploring the immune system and its connections to other systems of the body, such as the metabolic system, the nervous system and its direct bearing on human health and various diseases.

The Medical Immunosciences and Infection degree program deals with immunological topics from a medical perspective. The main objective of this research-oriented international degree program is to train students for future careers in medical research, focusing on the underlying mechanisms and the treatment of immune-mediated, inflammatory and infectious diseases. Students acquire specific knowledge in the areas of translational, immunological and infectiological research. Approaches currently followed in immunology and infection research are discussed in theoretical seminars and then immediately applied to students' research projects. Students can build an individual profile through their choice of elective modules. Graduates of this master's degree are equipped with all essential skills and abilities needed for independent academic work and a successful research career.

+ POSSIBLE LINES OF WORK

Medical and biomedical basic research (e.g. at Max Planck Institutes), development/production/marketing (industrial sector), molecular diagnostics (for medical, biotechnological, pharmaceutical, environmental, forensic questions; in clinical disciplines (e.g. neurology, dermatology, oncology, pediatrics), academia (teaching/research at universities, research institutions, etc.)

Degree	Language of instruction	Standard period of study	Start of program
Master of Science (MSc)	English	4 semester	Winter semester
Admission requirements			
<ul style="list-style-type: none"> • University degree (German or non-German) in a relevant discipline • English language proficiency (CEFR level B2) • Minimum grade of 2.3 or local equivalent • Specific modules with a certain amount of ECTS credits (see examination regulations) 			



Microbiology

Students in the research-oriented master's degree program Microbiology complete a mandatory educational program in the areas of: general and applied microbiology, medical and pharmaceutical microbiology, virology as well as agricultural and food microbiology.

The degree program stands out for its high share of practical work and independent project work. All microbiological systems are addressed with a view to biochemical, systematic, physiological, molecular-biological and genetic aspects. Among other key qualifications, students learn to independently plan and carry out scientific studies and to document and present scientific results both orally and in written form (also in English). The degree program thus equips students for microbiological and molecular-genetic work in all areas of employment within classic, molecular and applied microbiology.

+ POSSIBLE LINES OF WORK

Basic research in microbiology (e.g. Max Planck and Helmholtz Institutes, large-scale research facilities), academia (e.g. research at universities and other research institutions); development, production and marketing in the pharmaceutical industry, at biotechnology companies, food industry, chemical industry, quality assurance (e.g. in the pharmaceutical and food industries), microbiological diagnostics (e.g. hospital laboratories), teaching and training (e.g. at universities, research institutions, training of technical assistants), public administration (public health authorities), industry and trade associations

Degree	Language of instruction	Standard period of study	Start of program
Master of Science (MSc)	German and English	4 semester	Winter semester

Admission requirements

- University degree (German or non-German) in a relevant discipline
- German language proficiency (CEFR level C1)
- English language proficiency (CEFR level B2)
- Specific modules with a certain amount of ECTS credits (see examination regulations)



Molecular Cell Biology

All biological processes have a molecular foundation which we must understand in order to grasp life itself and explore the causes of disease. With organisms representing the highest form of organization, governing principles encompass many dimensions from the level of molecules to cells and unique organs. The objective of the Molecular Cell Biology degree program is to teach students these principles comprehensively. Students receive an overview of a broad spectrum of modern cell-biological, biochemical, genetic and computer-aided methods, enabling them to answer fundamental questions from biological and medical research.

Given that the master's degree program straddles three faculties (Mathematics and Natural Sciences, Medicine, Agriculture), it offers students access to a one-of-a-kind spectrum of topics and elective modules. It is also the explicit intent of the master's degree program that graduates immediately continue their studies towards a doctorate upon completion of the program.

+ POSSIBLE LINES OF WORK

Basic research in all areas of the life sciences as well as in (bio-)medical research (institutes of the Max Planck Society, big-science facilities, etc.), managerial position in the pharmaceutical industry, academia (teaching/research at universities, research institutions, etc.)

Degree	Language of instruction	Standard period of study	Start of program
Master of Science (MSc)	English	4 semester	Winter semester

Admission requirements

- University degree (German or non-German) in a relevant discipline
- English language proficiency (CEFR level C1)
- Minimum grade of 2.7 or local equivalent
- Specific modules and practical skills with a certain amount of ECTS credits (see examination regulations)
- Applicants from outside Germany or another EU country must pass the aptitude test for university studies.



FACULTY OF AGRICULTURE

Molecular Food Technology

The Molecular Food Technology master's degree program combines in interdisciplinary fashion aspects of agricultural, nutrition and natural sciences. The focus of this program is the design of production processes and the physical, microbiological and chemical changes that can be achieved to improve food preservation. In addition to exploring ways to efficiently produce food from sustainable raw materials, other central aspects of this degree program include e.g. the impact of product sensorics, food microbiology and hygiene, thermal and mechanical process technology, biotechnology as well as special methods of food processing.

What makes this master's degree program at the University of Bonn special is its focus on natural sciences and research. Students acquire a greater depth of understanding of the molecular aspects of food production as well as comprehensive methodological knowledge and skills in the areas of food technology, process technology, biotechnology, microbiology, and food chemistry. The paramount goal of this degree program is to evaluate the impact of food processing methods on food quality.

+ POSSIBLE LINES OF WORK

Work in research or teaching in Germany or abroad (universities, institutes of techWork in research or teaching in Germany or abroad (universities, institutes of technology, non-university research institutions), management position in research and development at an internationally networked company, management position in product or process development and production at a company in the food industry, a position of responsibility in the area of plant engineering and the manufacture of food processing equipment

Degree	Language of instruction	Standard period of study	Start of program
Master of Science (MSc)	German and English	4 semester	Summer and winter semester
Admission requirements			
<ul style="list-style-type: none"> • University degree (German or non-German) in a relevant discipline • German language proficiency (CEFR level C1) • English language proficiency (CEFR level B2) 			



FACULTY OF AGRICULTURE

Nature Conservation and Landscape Ecology

In the degree program Nature Conservation and Landscape Ecology, the nature conservation goals defined by society are examined in the light of recent research in the area of landscape ecology. The key objective of the degree program is to convey to students nature conservation expertise and the ability to employ their analytical and critical thinking skills to refine nature protection approaches and designs against a backdrop of rapid and ongoing global change. The program focuses on both regional and international aspects.

Students are integrated into research projects and learn to understand the inner workings of nature conservation and landscape ecology along with the respective scientific discourse. In terms of methodology, aside from the tried and tested, students also explore new approaches such as numerical model construction to derive scenarios or when using digital image processing in nature conservation monitoring. Processes in the landscape are evaluated against the backdrop of negotiation processes within society. On the basis of the scientific knowledge and insights conveyed to them in this master's degree program, graduates are able to develop and implement innovative conservation solutions.

+ POSSIBLE LINES OF WORK

Research and teaching at universities, scientific work at research centers (e.g. the Helmholtz Centre for Environmental Research/UFZ, the Research Center Jülich/FZJü), planning/application at public offices and authorities (e.g. the German Federal Agency for Nature Conservation/BfN, the Federal Ministry for the Environment, Nature Conservation, and Nuclear Security/BMU, the Federal Environment Agency/UBA, middle- and lower-level nature conservation authorities), planning/application in environment and planning offices, scientific policy consulting (e.g. UN organizations, EU, national governments, NGOs), other environmental protection-oriented institutions (national park administrations, biological field stations, conservation centers)

Degree	Language of instruction	Standard period of study	Start of program
Master of Science (MSc)	German and English	4 semester	Winter semester
Admission requirements			
<ul style="list-style-type: none"> • University degree (German or non-German) in a relevant discipline • German language proficiency (CEFR level C1) • English language proficiency (CEFR level B2) 			



Neurosciences

Neurosciences is a research-oriented, international master's degree program with the main goal of providing talented students with a comprehensive education in the rapidly expanding field of neurosciences. Students are prepared for careers in research or a related medical or biological field.

A key point of focus in the program is practical research experience in the laboratories of the participating departments and research groups. Mandatory courses in neuro-morphology, neurophysiology and molecular neurobiology as well as statistics, scientific writing and research ethics are designed to build a solid foundation during the first two semesters. Students then have the possibility to focus on one of these fields or choose from a broad spectrum of other areas, including among others neuroethology, neurogenetics, neuropharmacology, clinical neurosciences, cognitive neurosciences and reconstructive neurobiology.

+ POSSIBLE LINES OF WORK

Academia/neurobiological basic research (teaching/research at universities, research institutions), work in hospitals and specialized medical practices (e.g. neurology, neuropathology, psychiatry etc.), private sector: Development/production/marketing (pharmaceutical or medtech industries), academic publishing/scientific journalism, coordinative functions in neuroscience organizations

Degree	Language of instruction	Standard period of study	Start of program
Master of Science (MSc)	English	4 semester	Winter semester
Admission requirements			
<ul style="list-style-type: none"> • University degree (German or non-German) in a relevant discipline • English language proficiency (CEFR level B2) • Minimum grade of 2.3 or local equivalent • Specific modules with a certain amount of ECTS credits (see examination regulations) 			



FACULTY OF AGRICULTURE

Nutrition Sciences

The master's degree program Nutrition Sciences takes a deeper look at the basic principles of human nutrition, the analysis and interpretation of biochemical processes in the human digestive system as well as aspects of nutritional behavior and nutrition counseling. In addition to traditional subject matters of nutrition sciences, such as the impact of nutrition on the immune system or specific food technologies, key aspects of the program are international food security, the international food industry and food legislation.

The master's degree program at the University of Bonn is a research-oriented degree program that aims at equipping students with both the theoretical and practical skills needed to conduct independent and innovative research. Besides nutritional physiology and epidemiology, students acquire knowledge in areas such as molecular biology, biotechnology, food chemistry and food technology, toxicology, pathophysiology and dietetics, with some subjects being taught in interdisciplinary courses. Students are involved in research and development projects, preferably as part of assignment projects and the master's thesis, allowing them to directly participate in state-of-the-art and mostly interdisciplinary research.

+ POSSIBLE LINES OF WORK

National/international research and teaching in nutrition sciences (universities, specialized schools, non-university research organizations); managerial positions in research and development in the food and pharmaceutical industries; managerial positions in manufacturing, product development and engineering at food companies; managerial positions in clinical research; managerial positions at technology firms

Degree	Language of instruction	Standard period of study	Start of program
Master of Science (MSc)	German and English	4 semester	Summer and winter semester

Admission requirements

- University degree (German or non-German) in a relevant discipline
- German language proficiency (CEFR level C1)
- English language proficiency (CEFR level B2)



FACULTY OF MATHEMATICS AND NATURAL SCIENCES

Organismic Biology, Evolutionary Biology and Paleobiology (OEP Biology)

Organismic Biology, Evolutionary Biology and Palaeobiology (OEP Biology) is a research-oriented, international degree program that aims to give students a broad understanding of all aspects of organismic biology. Evolutionary biology and biodiversity research combine various disciplines such as systematics, phylogeny, palaeobiology, physiology, ecology, molecular biology, ethology and many more.

Students are introduced to a broad spectrum of methodological skills in scientific research that enable them to solve scientific problems in international and interdisciplinary research groups and networks. One point emphasized in the degree program is gathering practical research experience in the field and in laboratories of the participating research groups as well as in the large collections of the Alexander Koenig Research Museum, the Goldfuss Museum for Paleontology and the University of Bonn's botanical gardens. Instruction in the OEP Biology degree program is theory-oriented and aims at conveying to students the ability to think critically, analytically and strategically.

+ POSSIBLE LINES OF WORK

Basic research at universities and non-university research institutions, various types of work at collections/museums, employment at regional, supra-regional or global political and research facilities and public authorities

Degree	Language of instruction	Standard period of study	Start of program
Master of Science (MSc)	English	4 semester	Winter semester

Admission requirements

- University degree (German or non-German) in a relevant discipline
- English language proficiency (CEFR level C1)
- Minimum grade of 2.7 or local equivalent
- Specific modules with a certain amount of ECTS credits (see examination regulations)
- Applicants from outside Germany or another EU country must pass the aptitude test for university studies.



FACULTY OF MATHEMATICS AND NATURAL SCIENCES

Paleontology

The research-oriented degree program Paleontology has an excellent reputation both in Germany and abroad since all areas of paleontology are firmly anchored in both research and teaching: Invertebrate Paleontology, Vertebrate Paleontology, Micropaleontology and Paleobotany.

The commitment of researchers and staff is reflected in the excellent international reception of their research and graduates' outstanding degree of qualification. The activities of this program are integrated into the central research theme Evolution of the Earth and of Life and linked to the other work areas of the Department of Geosciences and Meteorology through intensive collaboration (e.g. climate archives, geochemistry of dinosaur bones, biomineralization). The degree program includes a small group of compulsory modules that is common to all three geosciences master's degree programs (Paleontology, Geology and Geochemistry/Petrology). These joint courses promote the scientific exchange of ideas among students. In addition, students gain an overview of the different work methods in the various specialized areas of geosciences, opening up the prospect of interdisciplinary projects.

+ POSSIBLE LINES OF WORK

Applied geology (groundwater resources, development collaboration, environmental protection, georisks), ministries and government offices (environmental protection), geological services, raw materials exploration/use and production materials (industrial sector), public relations, museums, academia (teaching/research at universities, research institutions, etc.)

Degree	Language of instruction	Standard period of study	Start of program
Master of Science (MSc)	German and English	4 semester	Summer and winter semester
Admission requirements			
<ul style="list-style-type: none"> • University degree (German or non-German) in a relevant discipline • German language proficiency (CEFR level C1) • English language proficiency (CEFR level B2) • Minimum grade of 2.5 or local equivalent 			



Physics

Specialization in the Physics master's degree program is aligned with the University's research focus, which is on particle physics, photonics and condensed matter physics. Dealing with interdisciplinary questions, students learn to connect the dots across disciplines and put their insights into scientific perspective. They furthermore learn to apply research methods and outcomes independently, responsibly and self-critically.

Students acquire the ability to tackle complex interrelationships and problems within the field of physics, using scientific methods to analyze them beyond the limits of the current state of knowledge and solving them to the greatest extent possible. This requires in-depth academic study in the areas of specialization. Building on basic scientific thought, students work through highly complex research questions to develop practical and strategic problem-solving skills.

Their in-depth analytical-methodological competences as well as their specialized and research-oriented mathematical and natural scientific education enable graduates of this degree program to flexibly meet the demands of a variety of professional fields.

+ POSSIBLE LINES OF WORK

Academia (teaching/research at universities, research institutions, etc.), research and development (industrial sector), administration and management, patents, public authorities and ministries, financial and software services, consulting, monitoring/production and distribution control

Degree	Language of instruction	Standard period of study	Start of program
Master of Science (MSc)	English	4 semester	Summer and winter semester
Admission requirements			
<ul style="list-style-type: none"> • University degree (German or non-German) in a relevant discipline • English language proficiency (CEFR level B2) • Specific modules with a certain amount of ECTS credits (see examination regulations) 			



FACULTY OF MATHEMATICS AND NATURAL SCIENCES

Physics of the Earth and Atmosphere

The overarching objective of the master's degree program is to convey to students advanced knowledge and skills that will enable them to practice the profession of meteorologist or geophysicist. In the area of meteorology, this means building on existing knowledge from the bachelor's degree program to, in the broadest sense, develop the ability to mathematically and natural scientifically observe, analyze and predict environmental variations that occur in the atmosphere or in connection with it. In the area of geophysics, such knowledge and skills primarily include the ability to mathematically and natural scientifically observe and analyze physical occurrences and phenomena that take place inside the earth (e.g. earthquakes). In the area of applied geophysics, the central skill conveyed to students is the ability to develop and deploy geophysical measurement procedures for the exploration, evaluation and use of georesources (e.g. mineral deposits, water).

The degree program puts particular emphasis on enabling students to independently solve constantly changing problems, respond flexibly to new challenges and develop innovative ideas. Students gain comprehensive specialized knowledge of diverse phenomena in the earth and its atmosphere while mastering the methods used to forecast future developments of processes. Graduates of this degree program have the ability to conduct and refine methods and procedures used to observe and—especially in meteorology—forecast the weather and climate.

+ POSSIBLE LINES OF WORK

Civil service (Deutscher Wetterdienst/German Weather Service), environmental protection/water authorities/waterborne transportation authorities, public-sector or private media (radio, television, online), providing expert opinion (insurers, environmental/ecological associations, consulting firms), development of processes, software, products, collection/analysis of technical data (e.g. inspection associations), academia (teaching/research at universities, research institutions, etc.), expert opinions and distribution in the area of renewable energies (solar and wind power), energy exchange

Degree	Language of instruction	Standard period of study	Start of program
Master of Science (MSc)	German and English	4 semester	Summer and winter semester

Admission requirements

- University degree (German or non-German) in a relevant discipline
- German language proficiency (CEFR level C1)
- Specific modules with a certain amount of ECTS credits (see examination regulations)



FACULTY OF MATHEMATICS AND NATURAL SCIENCES

Plant Sciences

The international degree program Plant Sciences deals with fundamental and applied aspects of this field. The aim of this program is to educate students in the basic areas of plant sciences and then integrate this knowledge into various specialized scientific fields. Students attend courses from the following main areas: Development of Plant Cells and Ultrastructure, Plant Biochemistry, Physiology and Molecular Biology as well as Plant Systematics and Biodiversity. In addition, students may choose from a large variety of lab courses in the following fields: Plant Physiology, Biochemistry, Molecular Biology; Transgenic Plants; Biological Diversity, Systematics and Evolution of Plants; Plant Cell Biology; Plant Biotechnology; Paleobotany; Ecology and Nature Conservation.

The Plant Sciences degree program cooperates with facilities external to the University of Bonn such as the Research Center Jülich, the Max Planck Institute for Plant Breeding in Cologne and the Universities of Düsseldorf and Cologne.

+ POSSIBLE LINES OF WORK

Academia (teaching/research at universities, research institutions, etc.), basic research in plant biology (universities, institutes of the Max Planck Society, big-science facilities, etc.), development/production/marketing (industrial sector, fields of plant protection and biotechnology, consulting (public authorities, environmental protection organizations)

Degree	Language of instruction	Standard period of study	Start of program
Master of Science (MSc)	English	4 semester	Winter semester

Admission requirements

- University degree (German or non-German) in a relevant discipline
- English language proficiency (CEFR level B2)
- Minimum grade of 2.7 or local equivalent
- Specific modules with a certain amount of ECTS credits (see examination regulations)



Psychology

In the field of psychology, obtaining a master's degree is very important. It is only in the master's phase that students go into scientific depth and specialize, which are prerequisites for a large number of professional fields. In the master's degree program, students expand and deepen their existing knowledge of methods of scientific data collection and analysis through the addition of multivariate statistics. At the same time, they continue to gain diagnostic knowledge of test theory and test construction and are introduced to psychological evaluation. Students refine and solidify their academic and professional competences by independently conducting an empirical project as well as through an internship that is integrated into the study program and related to a chosen professional field.

The master's degree program Psychology at the University of Bonn offers students numerous possibilities to prioritize basic and applied subjects, enabling them to develop profiles that reflect their personal interests, abilities and career plans.

+ POSSIBLE LINES OF WORK

Clinical area (psychotherapy, diagnostics, supervision), private economy/administration (personnel selection/development, corporate consulting, career/academic counseling, pedagogy (school psychology, guidance counseling, management at various types of homes, etc.), forensics (plausibility/criminal responsibility assessments, penal decisions), academia (teaching/research at universities or research institutions, etc.)

Degree	Language of instruction	Standard period of study	Start of program
Master of Science (MSc)	German and English	4 semester	Winter semester
Admission requirements			
<ul style="list-style-type: none"> • University degree (German or non-German) in a relevant discipline • German language proficiency (CEFR level C1) • English language proficiency (CEFR level B2) • Specific modules with a certain amount of ECTS credits (see examination regulations) 			

A smiling male teacher with dark hair, wearing a light blue and white checkered button-down shirt, stands in a classroom. Behind him is a large world map on a wall. In the foreground, the backs of several students' heads are visible, suggesting a classroom setting. The overall image has a soft, slightly faded appearance.

- ◊ Educational Sciences

- ◊ Biology
- ◊ Catholic Religious Education
- ◊ Chemistry
- ◊ Computer Science
- ◊ Educational Sciences
- ◊ English
- ◊ French
- ◊ Geography
- ◊ German
- ◊ Greek
- ◊ History
- ◊ Italian
- ◊ Latin
- ◊ Mathematics
- ◊ Philosophy
- ◊ Physics
- ◊ Protestant Religious Education
- ◊ Social Sciences
- ◊ Spanish

- ◊ Agricultural Science

- Agronomy (Crop Production)
- Animal Sciences (Animal Husbandry)
- Agricultural Economics and Social Sciences

- ◊ Nutrition Science and Home Economics

- Food Technology (Food Engineering)
- Market and Consumption

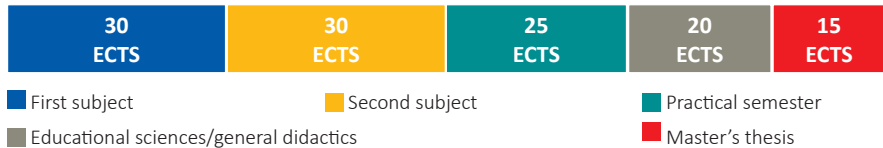
Master of Education (MEd)

Master of Education degree programs are consecutive degree programs that follow a teaching bachelor's degree program. In contrast to the polyvalent bachelor's degree program, the master's degree program has a stronger focus on subject didactics and educational sciences, including a period of at least five months of practical training at a school. This practical semester is completed in the second or third study semester. During this time, students spend most of their time at the chosen school. During the practical semester, students are to gain first practical experience as teachers to build on throughout the rest of their studies.

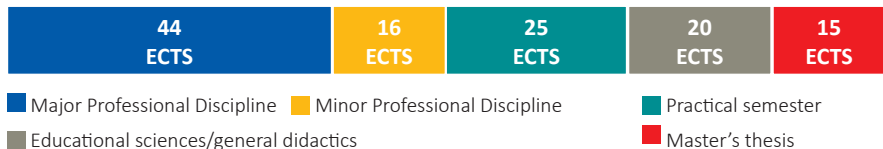
With completion of the Master of Education degree program, graduates can apply for practical teacher training (Referendariat). Practical teacher training is designed for a period of 18 months and completed with a state examination. Passing the state examination, candidates receive a license to work as a teacher and can apply for teaching positions at public schools in North Rhine-Westphalia.

Candidates who do not want to enter practical teacher training immediately after graduation from the master's degree program can, for example, work as substitute teachers. Beyond teaching at schools, a Master of Education degree qualifies for a variety of careers, e.g. in adult education, political education, workplace training and education management.

Master of Education grammar/comprehensive school



Master of Education vocational school





BONN CENTRE FOR TEACHER EDUCATION (BZL)

Educational Sciences

Educational sciences are the interface between subject-specific training on one side and school as a workplace on the other. The different scientific disciplines in this field aim at deepening educational theory and processes while taking their institutional and overall social organization into account.

In the area of educational and developmental processes, students are equipped with the necessary skills for their practical semester and for practical teacher training, which follows graduation. Students do not only learn about questions regarding the didactics and methodology of creating lessons and learning environments but also about offering support in a differentiated and integrative way, preparing them for teaching an increasingly heterogeneous and diverse group of learners. In addition, this field covers the entire range of psychological and social aspects of learning inside and outside the school as well as their identification.

+ POSSIBLE LINES OF WORK

Schools (teacher, principal, functional positions), teacher education at seminars/universities, school authority/ministry positions, academia/research, educational/career guidance

Degree	Program option	Standard period of study	Start of program
Master of Education (MEd)	<ul style="list-style-type: none"> Grammar/Comprehensive school Vocational school 	4 semester	Summer and winter semeste

Admission requirements

- University degree (German or non-German) in a relevant discipline
- German language proficiency (CEFR level C2) and knowledge of two foreign languages (modern languages on CEFR level A2 or qualification in Latin/Greek)
- Specific modules with a certain amount of ECTS credits (see examination regulations)
- 9 weeks internship, incl. 25 days at a school



FACULTY OF MATHEMATICS AND NATURAL SCIENCES

Biology

The Master of Education degree program in Biology focuses on microbiology and human biology. Students learn to safely handle microbes, including working in sterile environments and using isolation methods, as well as to enrich, characterize and identify microbes. In addition to contents from human biology and immunobiology, students are introduced to practical experiments that can be conducted in biology lessons.

While students in the bachelor's degree program focus on gaining subject-specific knowledge, the Master of Education degree program puts a stronger emphasis on educational sciences and subject didactics. The modules on subject didactics cover theoretical aspects of teaching and learning biology, offering insights to research on biological didactics. Students learn to plan, execute and reflect on topical and curricular teaching units as well as to conceptualize and design practical biology lessons, taking questions of inclusion into account.

In teaching degree programs designed for grammar and comprehensive schools, students choose two school subjects. Thus, in addition to Biology, students are enrolled for a second subject as well as Educational Sciences. The five-month practical semester is a key component of the degree program.

+ POSSIBLE LINES OF WORK

Teaching at schools

For other possible lines of work, please refer to the Microbiology (MSc) degree program.

Degree	Program option	Standard period of study	Start of program
Master of Education (MEd)	<ul style="list-style-type: none"> Grammar/Comprehensive school 	4 semester	Summer and winter semester

Admission requirements

- University degree (German or non-German) in a relevant discipline
- German language proficiency (CEFR level C2) and knowledge of two foreign languages (modern languages on CEFR level A2 or qualification in Latin/Greek)
- Specific modules with a certain amount of ECTS credits (see examination regulations)
- 9 weeks internship, incl. 25 days at a school



Catholic Religious Education

In the subject of Catholic Religious Education in the Master of Education degree program, students engage with the contents and traditions of the Christian faith using academic/scientific methods. The question of God, which immediately leads to the question of humanity, is an essential element of this degree program. Students deepen their knowledge of biblical, historical, systematic and practical theology themes.

While students in the bachelor's degree program focus on gaining subject-specific knowledge, the Master of Education degree program puts a stronger emphasis on educational sciences and subject didactics. The basic approach to teaching religion is Elementarisierung, or the breaking down of difficult concepts into basic understandable elements. The five cornerstones of Elementarisierung—essential structures, truths, ways of access, experiences and forms of learning—are applied to exegetical or church-historical themes. Students explore theological theory and teaching/learning processes in religious instruction, giving special consideration to questions of inclusion. This provides a backdrop to the practical parts of this teaching degree program and enables students to work through the specific challenges of religious instruction.

In teaching degree programs for grammar and comprehensive schools, students choose two school subjects. Thus, in addition to Catholic Religious Education, students are enrolled for a second subject as well as Educational Sciences. The practical semester is a key component of the degree program.

+ POSSIBLE LINES OF WORK

Teaching at schools

For other possible lines of work, please refer to the Old Catholic Theology and Ecumenical Theology (MA) degree program.

Degree	Program option	Standard period of study	Start of program
Master of Education (MEd)	• Grammar/Comprehensive school	4 semester	Summer and winter semester
Admission requirements			
<ul style="list-style-type: none"> • University degree (German or non-German) in a relevant discipline • German language proficiency (CEFR level C2) and knowledge of two foreign languages (modern languages on CEFR level A2 or qualification in Latin/Greek) • Specific modules with a certain amount of ECTS credits (see examination regulations) • 9 weeks internship, incl. 25 days at a school 			



FACULTY OF MATHEMATICS AND NATURAL SCIENCES

Chemistry

The Master of Education degree program in Chemistry explores the composition, structure, characteristics and transformation of substances. An important element of this program is describing and characterizing substances as well as the physical laws to which transformation processes adhere. Students are given the opportunity to apply their theoretical knowledge, among others, in the three main areas of chemistry: inorganic chemistry, organic chemistry and physical chemistry.

While students in the bachelor's degree program focus on gaining subject-specific knowledge, the Master of Education degree program puts a stronger emphasis on educational sciences and subject didactics. Students develop concepts for practical experimental techniques that can be used in school lessons, taking into account the specific circumstances that apply there (e.g. safety, relevance and learners' perception).

In teaching degree programs designed for grammar and comprehensive schools, students choose two school subjects. Thus, in addition to Chemistry, students are enrolled for a second subject as well as Educational Sciences. The practical semester is a key component of the degree program.

+ POSSIBLE LINES OF WORK

Teaching at schools

For other possible lines of work, please refer to the Chemistry (MSc) degree program.

Degree	Program option	Standard period of study	Start of program
Master of Education (MEd)	• Grammar/Comprehensive school	4 semester	Summer and winter semeste

Admission requirements

- University degree (German or non-German) in a relevant discipline
- German language proficiency (CEFR level C2) and knowledge of two foreign languages (modern languages on CEFR level A2 or qualification in Latin/Greek)
- Specific modules with a certain amount of ECTS credits (see examination regulations)
- 9 weeks internship, incl. 25 days at a school



FACULTY OF MATHEMATICS AND NATURAL SCIENCES

Computer Science

The subject of Computer Science in the Master of Education degree program has a dual focus. One key area focuses on the knowledge requirements stipulated in the core instruction plan for computer science and the educational standards pertaining thereto. The second key area focuses on specific contents, methods and tools to conduct computer science lessons that not only meet subject content requirements but are also motivating and theoretically well-grounded following the active learning approach. Students furthermore accumulate knowledge in order to reflect on the nature of specialized instruction, examine and probe into teaching concepts and further develop and improve teaching strategies and methods based on latest research findings. Students are familiarized with general technical topics in the areas of algorithms, graphics/ visual systems/ audio, information and communications management as well as intelligent systems and discuss research- and theory-oriented questions.

While students in the bachelor's degree program focus on gaining subject-specific knowledge, the Master of Education degree program puts a stronger emphasis on educational sciences and subject didactics. In courses on subject didactics, students are prepared for practical teaching. Especially during the practical semester, experiences made in school lessons are linked to studies of subject didactics.

In teaching degree programs designed for grammar and comprehensive schools, students choose two school subjects. Thus, in addition to Computer Science, students are enrolled for a second subject as well as Educational Sciences. The practical semester is a key component of the degree program.

+ POSSIBLE LINES OF WORK

Teaching at schools

For other possible lines of work, please refer to the Computer Science (MSc) degree program.

Degree	Program option	Standard period of study	Start of program
Master of Education (MEd)	• Grammar/Comprehensive school	4 semester	Summer and winter semeste

Admission requirements

- University degree (German or non-German) in a relevant discipline
- German language proficiency (CEFR level C2) and knowledge of two foreign languages (modern languages on CEFR level A2 or qualification in Latin/Greek)
- Specific modules with a certain amount of ECTS credits (see examination regulations)
- 9 weeks internship, incl. 25 days at a school



FACULTY OF ARTS

English

The subject of English in the Master of Education program has a geographical focus on Great Britain, North America and the post-colonial world. As part of its interdisciplinary focus, this degree program includes in-depth coverage of language, literature and culture and also addresses questions from the areas of history, philosophy, politics and media studies. The degree program's main academic content focus is on English linguistics and communication, North American studies as well as British and post-colonial literary and cultural studies.

While students in the bachelor's degree program focus on gaining subject-specific knowledge, the Master of Education degree program puts a stronger emphasis on educational sciences and subject didactics. The modules on subject didactics cover didactic theories, strategies and methods of teaching English. Students gather expertise in active learning methods as well as approaches and teaching techniques from the areas of language didactics, literary and cultural didactics as well as media didactics.

In teaching degree programs designed for grammar and comprehensive schools, students choose two school subjects. Thus, in addition to English, students are enrolled for a second subject as well as Educational Sciences. The practical semester is a key component of the degree program.

+ POSSIBLE LINES OF WORK

Teaching at schools

For other potential lines of work please refer to the degree programs of English Literatures and Cultures (MA), North American Studies (MA) and Applied Linguistics (MA).

Degree	Program option	Standard period of study	Start of program
Master of Education (MEd)	• Grammar/Comprehensive school	4 semester	Summer and winter semeste

Admission requirements

- University degree (German or non-German) in a relevant discipline
- German language proficiency (CEFR level C2) and knowledge of two foreign languages (modern languages on CEFR level A2 or qualification in Latin/Greek)
- Specific modules with a certain amount of ECTS credits (see examination regulations)
- 9 weeks internship, incl. 25 days at a school



French

The subject of French in the Master of Education program focuses on French language practice as well as French literature, linguistics and cultural studies. In terms of subject-specific content, this degree program covers the improvement of practical French language skills—both oral and written—as well as translations in academic and socio-cultural contexts. Content from the areas of literature and linguistics is covered as well. Students furthermore learn about multiple methods and theories from the areas of linguistics and literary criticism as well as their practical and independent application. This includes critically analyzing the content and methodology of French literature of various epochs, genres and authors, taking the respective cultural, political, social and historical context into account.

While students in the bachelor's degree program focus on gaining subject-specific knowledge, the Master of Education degree program puts a stronger emphasis on educational sciences and subject didactics. Students learn about theories of language teaching and language learning, studying the didactics and methodologies of communicative foreign language instruction while giving special consideration to differences with regard to language and culture as well as other forms of heterogeneity within learning groups.

In teaching degree programs designed for grammar and comprehensive schools, students choose two school subjects. Thus, in addition to French, students are enrolled for a second subject as well as Educational Sciences. The practical semester is a key component of the degree program.

+ POSSIBLE LINES OF WORK

Teaching at schools

For other possible lines of work, please refer to the Romance Studies (MA) degree program.

Degree	Program option	Standard period of study	Start of program
Master of Education (MEd)	• Grammar/Comprehensive school	4 semester	Summer and winter semeste

Admission requirements

- University degree (German or non-German) in a relevant discipline
- German language proficiency (CEFR level C2) and knowledge of two foreign languages (modern languages on CEFR level A2 or qualification in Latin/Greek)
- Specific modules with a certain amount of ECTS credits (see examination regulations)
- 9 weeks internship, incl. 25 days at a school



FACULTY OF MATHEMATICS AND NATURAL SCIENCES

Geography

The subject of Geography in the Master of Education degree program focuses on current research topics in areas of geography such as geomorphology, soil science, hydrogeography, climate geography and landscape ecology, population, settlement, social and economic geography as well as geographic development research.

While students in the bachelor's degree program focus on gaining subject-specific knowledge, the Master of Education degree program puts a stronger emphasis on educational sciences and subject didactics. The didactic modules address current research priorities in geography didactics from a theoretical perspective as well as with regard to their practical application. These include topics such as teacher expertise, individual learning prerequisites and school students' interests and preconceptions. The curriculum is supplemented by basic concepts such as global learning and subject-specific work methods, e.g. learning from local/regional geography. Another focus is acquiring competencies such as spatial orientation and system competence. Additionally, the program offers an excursion module which gives students first-hand exposure to selected geographical questions and regional examples.

In teaching degree programs designed for grammar and comprehensive schools, students choose two school subjects. Thus, in addition to Geography, students are enrolled for a second subject as well as Educational Sciences. The practical semester is a key component of the degree program.

+ POSSIBLE LINES OF WORK

Teaching at schools

For other possible lines of work, please refer to the Geography (MSc) degree program.

Degree	Program option	Standard period of study	Start of program
Master of Education (MEd)	• Grammar/Comprehensive school	4 semester	Summer and winter semeste

Admission requirements

- University degree (German or non-German) in a relevant discipline
- German language proficiency (CEFR level C2) and knowledge of two foreign languages (modern languages on CEFR level A2 or qualification in Latin/Greek)
- Specific modules with a certain amount of ECTS credits (see examination regulations)
- 9 weeks internship, incl. 25 days at a school



German

The subject of German in the Master of Education degree program offers a broad education in German studies and a balanced content mix between methodology/theory, linguistics, literature, cultural studies and media history. Students deepen their knowledge of central areas of German linguistics while giving close consideration to modern research questions and analytical processes. Another key part of this degree program is exploring theoretical concepts from the areas of literature and media studies as well as questions of literary history.

The Master of Education degree program systematically expands on the knowledge and competencies acquired in the bachelor's degree program, but with a stronger emphasis on subject didactics and practical school matters (as opposed to subject-specific research). In modules on subject didactics, students learn about teaching German as a school subject and deepen their theoretical and methodological knowledge of didactics.

In teaching degree programs designed for grammar and comprehensive schools, students choose two school subjects. Thus, in addition to German, students are enrolled for a second subject as well as Educational Sciences. The practical semester is a key component of the degree program.

+ POSSIBLE LINES OF WORK

Teaching at schools

For other possible lines of work, please refer to the German Language and Literature (MA) degree program.

Degree	Program option	Standard period of study	Start of program
Master of Education (MEd)	• Grammar/Comprehensive school	4 semester	Summer and winter semester

Admission requirements

- University degree (German or non-German) in a relevant discipline
- German language proficiency (CEFR level C2) and knowledge of two foreign languages (modern languages on CEFR level A2 or qualification in Latin/Greek)
- Specific modules with a certain amount of ECTS credits (see examination regulations)
- 9 weeks internship, incl. 25 days at a school



FACULTY OF ARTS

Greek

The subject of Greek in the Master of Education degree program focuses on Greek language acquisition as well as Greek literature, linguistics and cultural studies. A thorough education in Greek language and cultural studies are equally important. With regard to subject knowledge, the degree program has a dual focus. Enhancing students' practical Greek skills by expanding their knowledge of syntax and style as well as by translating complex German texts into Greek is one key area. Another key area is the study of literature from the Greek archaic period, classical period, Hellenistic period and late antiquity through which students gain insight into the current state of research on authors, genres, themes and periods of Greek literature.

While students in the bachelor's degree program focus on building subject-specific knowledge, the Master of Education degree program puts a stronger emphasis on educational sciences and subject didactics. Students learn about theories of language teaching and learning as well as the role of Greek in multilingual teaching, studying the didactics and methodologies of foreign language instruction while giving special consideration to differences with regard to language and culture as well as other forms of heterogeneity within learning groups.

In teaching degree programs designed for grammar and comprehensive schools, students choose two school subjects. Thus, in addition to Greek, students are enrolled for a second subject as well as Educational Sciences. The practical semester is a key component of the degree program.

+ POSSIBLE LINES OF WORK

Teaching at schools

Degree	Program option	Standard period of study	Start of program
Master of Education (MEd)	• Grammar/Comprehensive school	4 semester	Summer and winter semester

Admission requirements

- University degree (German or non-German) in a relevant discipline
- German language proficiency (CEFR level C2) and knowledge of two foreign languages (modern languages on CEFR level A2 or qualification in Latin/Greek)
- Specific modules with a certain amount of ECTS credits (see examination regulations)
- 9 weeks internship, incl. 25 days at a school



History

The subject of History in the Master of Education degree program focuses on the methodological exploration of historical events, persons, objects, structures and processes, familiarizing students with the questions, methods, theories and approaches of historical research. Students acquire expert knowledge of central aspects of the three great historical epochs: antiquity, the Middle Ages and the modern era. Furthermore, they acquire the methodological and theoretical competences needed to work with relics of the past. At the heart of the program is students' work with historical sources, verifying their authenticity as well as analyzing and interpreting their significance.

While students in the bachelor's degree program focus on gaining subject-specific knowledge, the Master of Education degree program puts a stronger emphasis on educational sciences and subject didactics. Through didactic modules, students develop the ability to transform specialized questions and research results into relatable history lessons. Starting with characteristic topics for school lesson series, students learn about the overarching principles of dealing with historical objects. On this basis, students discuss different approaches to learning and teaching history as well as their practical application in the classroom.

In teaching degree programs designed for grammar and comprehensive schools, students choose two school subjects. Thus, in addition to History, students are enrolled for a second subject as well as Educational Sciences. The practical semester is a key component of the degree program.

+ POSSIBLE LINES OF WORK

Teaching at schools

For other possible lines of work, please refer to the History (MA) degree program.

Degree	Program option	Standard period of study	Start of program
Master of Education (MEd)	• Grammar/Comprehensive school	4 semester	Summer and winter semeste

Admission requirements

- University degree (German or non-German) in a relevant discipline
- German language proficiency (CEFR level C2) and knowledge of two foreign languages (modern languages on CEFR level A2 or qualification in Latin/Greek)
- Specific modules with a certain amount of ECTS credits (see examination regulations)
- 9 weeks internship, incl. 25 days at a school



Italian

The subject of Italian in the Master of Education degree program focuses on Italian language practice as well as Italian literature, linguistics and cultural studies. In terms of subject-specific content, this degree program covers the improvement of practical Italian language skills—both oral and written—as well as translations of academic and socio-cultural contexts. Content from the areas of literature and linguistics is included as well. Students furthermore learn about multiple methods and theories from the areas of linguistics and literary criticism as well as their practical and independent application. This includes critically analyzing the content and methodology of Italian literature of various epochs, genres and authors, taking the respective cultural, political, social and historical context into account.

While students in the bachelor's degree program focus on gaining subject-specific knowledge, the Master of Education degree program puts a stronger emphasis on educational sciences and subject didactics. Students learn about theories of language teaching and language learning, studying the didactics and methodologies of communicative foreign language instruction while giving special consideration to differences with regard to language and culture as well as other forms of heterogeneity within learning groups.

In teaching degree programs designed for grammar and comprehensive schools, students choose two school subjects. Thus, in addition to Italian, students are enrolled for a second subject as well as Educational Sciences. The practical semester is a key component of the degree program.

+ POSSIBLE LINES OF WORK

Teaching at schools

For other possible lines of work, please refer to the Romance Studies (MA) degree program.

Degree	Program option	Standard period of study	Start of program
Master of Education (MEd)	• Grammar/Comprehensive school	4 semester	Summer and winter semeste

Admission requirements

- University degree (German or non-German) in a relevant discipline
- German language proficiency (CEFR level C2) and knowledge of two foreign languages (modern languages on CEFR level A2 or qualification in Latin/Greek)
- Specific modules with a certain amount of ECTS credits (see examination regulations)
- 9 weeks internship, incl. 25 days at a school



FACULTY OF ARTS

Latin

The subject of Latin in the Master of Education degree program focuses on Latin language acquisition as well as Latin literature, linguistics and cultural studies. A thorough education in Latin language and cultural studies are equally important. With regard to subject knowledge, the degree program has a dual focus. Enhancing students' practical Latin skills by expanding their knowledge of vocabulary, syntax and style as well as by translating complex German texts into Latin is one key area. Another key area is the study of Latin literature through which students learn to work with research problems and methods of Latin philology and acquire knowledge of the current state of research on authors, genres, themes and periods of Latin literature.

While students in the bachelor's degree program focus on gaining subject-specific knowledge, the Master of Education degree program puts a stronger emphasis on educational sciences and subject didactics. Students learn about theories of language teaching and learning as well as the role of Latin in multilingual teaching, studying the didactics and methodologies of foreign language teaching while giving special consideration to differences with regard to language and cultural as well as other forms of heterogeneity within learning groups.

In teaching degree programs designed for grammar and comprehensive schools, students choose two school subjects. Thus, in addition to Latin, students are enrolled for a second subject as well as Educational Sciences. The practical semester is a key component of the degree program.

+ POSSIBLE LINES OF WORK

Teaching at schools

Degree	Program option	Standard period of study	Start of program
Master of Education (MEd)	• Grammar/Comprehensive school	4 semester	Summer and winter semeste

Admission requirements

- University degree (German or non-German) in a relevant discipline
- German language proficiency (CEFR level C2) and knowledge of two foreign languages (modern languages on CEFR level A2 or qualification in Latin/Greek)
- Specific modules with a certain amount of ECTS credits (see examination regulations)
- 9 weeks internship, incl. 25 days at a school



FACULTY OF MATHEMATICS AND NATURAL SCIENCES

Mathematics

As a structural science, the objective of Mathematics in the Master of Education degree program is to prove statements about mathematical objects and structures according to the principles of logic and to construct and refine mathematical theories. Such theories should be phrased generally enough for results to be applied to as many real situations as possible. Students engage with current research topics in mathematics from the areas of arithmetic, geometry, algebra, mathematical analysis, probability and statistics, linear algebra and mathematical modeling.

While students in the bachelor's degree program focus on gaining subject-specific knowledge, the Master of Education degree program puts a stronger emphasis on educational sciences and subject didactics. By learning to practically convey subject knowledge to others, students can deepen their own understanding of the subject. Students are introduced to a broad range of methods of constructing mathematical proofs, varying tasks and designing stimulating mathematics lessons. In order to adequately address heterogeneity among learners at school, topics such as differences in basic mathematical preconceptions, creativity and giftedness as well as dyscalculia are explored along with their effects on instruction.

In teaching degree programs designed for grammar and comprehensive schools, students choose two school subjects. Thus, in addition to Mathematics, students are enrolled for a second subject as well as Educational Sciences. The practical semester is a key component of the degree program.

+ POSSIBLE LINES OF WORK

Teaching at schools

For other possible lines of work, please refer to the Mathematics (MSc) degree program.

Degree	Program option	Standard period of study	Start of program
Master of Education (MEd)	• Grammar/Comprehensive school	4 semester	Summer and winter semeste

Admission requirements

- University degree (German or non-German) in a relevant discipline
- German language proficiency (CEFR level C2) and knowledge of two foreign languages (modern languages on CEFR level A2 or qualification in Latin/Greek)
- Specific modules with a certain amount of ECTS credits (see examination regulations)
- 9 weeks internship, incl. 25 days at a school



Philosophy

The subject of Philosophy in the Master of Education degree program deals with basic questions of reality, the world, life as well as actions and cognition. Students gain an overview of central concepts, arguments, theories, approaches and school traditions in various specialized areas of philosophy. These include topics such as theoretical/practical philosophy, history of philosophy, logic and epistemology as well as metaphysics and philosophy of religion. Current areas of application of philosophy, such as bioethics, are also covered in this program.

While students in the bachelor’s degree program focus on gaining subject-specific knowledge, the Master of Education degree program puts a stronger emphasis on educational sciences and subject didactics. Students learn about various approaches to teaching philosophy as well as methods of planning and conducting philosophy lessons. Graduates of the degree program have the ability to relate specialized philosophical theories to real-world questions and thus use the thought-provoking power of philosophy to shape lessons that are oriented towards finding sense and value.

In teaching degree programs designed for grammar and comprehensive schools, students choose two school subjects. Thus, in addition to Philosophy, students are enrolled for a second subject as well as Educational Sciences. The practical semester is a key component of the degree program.

+ POSSIBLE LINES OF WORK

Teaching at schools

For other possible lines of work, please refer to the Philosophy (MA) degree program.

Degree	Program option	Standard period of study	Start of program
Master of Education (MEd)	• Grammar/Comprehensive school	4 semester	Summer and winter semeste

Admission requirements

- University degree (German or non-German) in a relevant discipline
- German language proficiency (CEFR level C2) and knowledge of two foreign languages (modern languages on CEFR level A2 or qualification in Latin/Greek)
- Specific modules with a certain amount of ECTS credits (see examination regulations)
- 9 weeks internship, incl. 25 days at a school



FACULTY OF MATHEMATICS AND NATURAL SCIENCES

Physics

In the subject of Physics in the Master of Education degree program, the aim is to capture states and occurrences in nature at a quantitative and qualitative level and describe them on the basis of generally valid physical laws. The program focuses on experimental physics and theoretical physics. In experimental physics, students make experimental observations to derive underlying laws of nature ranging from mechanics to particle physics. This is covered in a lab course, for example, in which students conduct experiments in atomic and solid-state physics as well as nuclear and elementary particle physics. Theoretical physics, on the other hand, starts from a few axioms to describe in logical-mathematical fashion the interplay between objects and forces on macroscopic and microscopic scales.

While students in the bachelor's degree program focus on gaining subject-specific knowledge, the Master of Education degree program puts a stronger emphasis on educational sciences and subject didactics. In these modules, students tackle current topics related to teaching at schools. They learn to use teacher-directed and student-led experiments in class and explore specific questions that are important for work at schools.

In teaching degree programs designed for grammar and comprehensive schools, students choose two school subjects. Thus, in addition to Physics, students are enrolled for a second subject as well as Educational Sciences. The practical semester is a key component of the degree program.

+ POSSIBLE LINES OF WORK

Teaching at schools

For other possible lines of work, please refer to the Physics (MSc) degree program.

Degree	Program option	Standard period of study	Start of program
Master of Education (MEd)	• Grammar/Comprehensive school	4 semester	Summer and winter semester

Admission requirements

- University degree (German or non-German) in a relevant discipline
- German language proficiency (CEFR level C2) and knowledge of two foreign languages (modern languages on CEFR level A2 or qualification in Latin/Greek)
- Specific modules with a certain amount of ECTS credits (see examination regulations)
- 9 weeks internship, incl. 25 days at a school



Protestant Religious Education

In the subject of Protestant Religious Education in the Master of Education degree program, students acquire research-based knowledge of Christianity as a possibility for humanity to find meaning in life, as a guide to leading one's life and finding values and as an influential factor in western culture and society. The subject-specific topics covered in this program include systematic theology with questions from dogmatic theology and ethics as well as biblical criticism with questions raised by Old and New Testament exegetics. Ecumenical topics and different options of addressing religious plurality are also important areas covered in this degree program.

While students in the bachelor's degree program focus on gaining subject-specific knowledge, the Master of Education degree program puts a stronger emphasis on educational sciences and subject didactics. Students acquire academic and profession-related knowledge about the nature and goal of education and instruction from the Protestant perspective and about the general conditions, goals, methods and subjects of Protestant religious education. As an important part of this, students theologically and didactically explore central topics of religious education.

In teaching degree programs designed for grammar and comprehensive schools, students choose two school subjects. Thus, in addition to Protestant Religious Education, students are enrolled for a second subject as well as Educational Sciences. The practical semester is a centerpiece of the degree program.

+ POSSIBLE LINES OF WORK

Teaching at schools

For other possible lines of work, please refer to the Protestant Theology (MA) degree program.

Degree	Program option	Standard period of study	Start of program
Master of Education (MEd)	• Grammar/Comprehensive school	4 semester	Summer and winter semester

Admission requirements

- University degree (German or non-German) in a relevant discipline
- German language proficiency (CEFR level C2) and knowledge of two foreign languages (modern languages on CEFR level A2 or qualification in Latin/Greek)
- Specific modules with a certain amount of ECTS credits (see examination regulations)
- 9 weeks internship, incl. 25 days at a school



Social Sciences

The subject of Social Sciences in the Master of Education degree program focuses on identifying and defining social and political problem situations, placing them in broader contexts and working out basic approaches to theories of society, politics and the state. Students are introduced to the analysis of political and social structures, processes and developments. An important aspect is learning to assess conditions that lead to social problems, taking historical examples of such conditions into consideration and examining possibilities for reshaping or influencing them.

While students in the bachelor's degree program focus on gaining subject-specific knowledge, the Master of Education degree program puts a stronger emphasis on educational sciences and subject didactics. Students learn to use methods, work techniques and media to illustrate political, social and economic content in the classroom. This includes elaborating and planning own research and teaching projects. In subject didactics, students also tackle questions of inclusion in political education.

In teaching degree programs designed for grammar and comprehensive schools, students choose two school subjects. Thus, in addition to Social Sciences, students are enrolled for a second subject as well as Educational Sciences. The practical semester is a key component of the degree program.

+ POSSIBLE LINES OF WORK

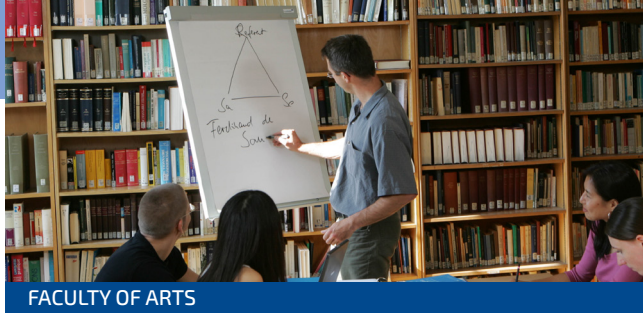
Teaching at schools

For other possible lines of work, please refer to the Sociology (MA) degree program.

Degree	Program option	Standard period of study	Start of program
Master of Education (MEd)	• Grammar/Comprehensive school	4 semester	Summer and winter semeste

Admission requirements

- University degree (German or non-German) in a relevant discipline
- German language proficiency (CEFR level C2) and knowledge of two foreign languages (modern languages on CEFR level A2 or qualification in Latin/Greek)
- Specific modules with a certain amount of ECTS credits (see examination regulations)
- 9 weeks internship, incl. 25 days at a school



FACULTY OF ARTS

Spanish

The subject of Spanish in the Master of Education program focuses on Spanish language practice as well as Spanish literature, linguistics and cultural studies. In terms of subject-specific content, this degree program covers the improvement of practical Spanish language skills—both oral and written—as well as translations in academic and socio-cultural contexts. Content from the areas of literature and linguistics is covered as well. Students furthermore learn about multiple methods and theories from the areas of linguistics and literary criticism as well as their practical and independent application. This includes critically analyzing the content and methodology of Spanish literature of various epochs, genres and authors, taking the respective cultural, political, social and historical context into account.

While students in the bachelor's degree program focus on gaining subject-specific knowledge, the Master of Education degree program puts a stronger emphasis on educational sciences and subject didactics. Students learn about theories of language teaching and language learning, studying the didactics and methodologies of communicative foreign language instruction while giving special consideration to differences with regard to language and culture as well as other forms of heterogeneity within learning groups.

In teaching degree programs designed for grammar and comprehensive schools, students choose two school subjects. Thus, in addition to Spanish, students are enrolled for a second subject as well as Educational Sciences. The practical semester is a key component of the degree program.

+ POSSIBLE LINES OF WORK

Teaching at schools

For other possible lines of work, please refer to the Romance Studies (MA) degree program.

Degree	Program option	Standard period of study	Start of program
Master of Education (MEd)	• Grammar/Comprehensive school	4 semester	Summer and winter semeste

Admission requirements

- University degree (German or non-German) in a relevant discipline
- German language proficiency (CEFR level C2) and knowledge of two foreign languages (modern languages on CEFR level A2 or qualification in Latin/Greek)
- Specific modules with a certain amount of ECTS credits (see examination regulations)
- 9 weeks internship, incl. 25 days at a school



FACULTY OF AGRICULTURE

Agricultural Science

The subject of Agricultural Science in the Master of Education degree program explores all questions regarding the primary production of food for humans and animals as well as renewable resources. Subdisciplines are crop production, animal science, ecological agriculture as well as economics and social sciences. With Agricultural Science as their Major Professional Discipline, students choose one of three Minor Professional Disciplines: Crop Science (Crop Farming), Animal Science (Animal Breeding) or Agricultural Economics and Social Sciences. By choosing a Minor Professional Discipline, students can specialize in a certain field.

Educational sciences and subject didactics are paramount in this degree program, with the latter enabling prospective vocational school teachers to adequately convey their specialist knowledge to students training for relevant professions (e.g. agriculture, forestry, floristry, gardening, horse industry).

In teaching degree programs for vocational schools, students combine a Major Professional Discipline with a Minor Professional Discipline. In addition, students are trained in educational sciences. The practical semester is a key component of the degree program.

+ POSSIBLE LINES OF WORK

Teaching at schools

For other possible lines of work, please refer to the Agricultural and Food Economics (MSc), Crop Sciences (MSc) and Animal Sciences (MSc) degree programs.

Degree	Program option	Standard period of study	Start of program
Master of Education (MEd)	• Vocational school	4 semester	Summer and winter semester

Admission requirements

- University degree (German or non-German) in a relevant discipline
- German language proficiency (CEFR level C2) and knowledge of two foreign languages (modern languages on CEFR level A2 or qualification in Latin/Greek)
- Specific modules with a certain amount of ECTS credits (see examination regulations)
- 9 weeks internship, incl. 25 days at a school



FACULTY OF AGRICULTURE

Nutrition Science and Home Economics

The subject of Nutritional Science and Home Economics in the Master of Education degree program deals with topics related to digestive and metabolic processes (especially in humans), industrial food production and processing as well as the economic, sociological and technical aspects of the agricultural and food industry. This includes the fields of nutrition science, food technology, home economics and food chemistry. The Major Professional Discipline of Nutrition Science and Home Economics is supplemented by the selection of one of two Minor Professional Disciplines: Food Technology or Market and Consumption. Their choice of a Minor Professional Discipline provides students with additional specialization.

In the course of the program, increasing emphasis is placed on Educational Sciences and subject didactics. The latter area is designed to enable prospective vocational school teachers to adequately convey their specialist knowledge to students training for their respective occupations, e.g. as specialists in the institutional food services industry, cooks, butchers or home economists.

In teaching degree programs for vocational schools, students combine a Major Professional Discipline with a Minor Professional Discipline. In addition, students are trained in Educational Sciences. The practical semester is a key component of the degree program.

+ POSSIBLE LINES OF WORK

Teaching at schools

For other possible lines of work, please refer to the Nutrition Sciences (MSc) and Molecular Food Technology (MSc) degree programs.

Degree	Program option	Standard period of study	Start of program
Master of Education (MEd)	• Vocational school	4 semester	Summer and winter semeste
Admission requirements			
<ul style="list-style-type: none"> • University degree (German or non-German) in a relevant discipline • German language proficiency (CEFR level C2) and knowledge of two foreign languages (modern languages on CEFR level A2 or qualification in Latin/Greek) • Specific modules with a certain amount of ECTS credits (see examination regulations) • 9 weeks internship, incl. 25 days at a school 			

- 
- Disaster Management and Risk Governance
 - Drug Regulatory Affairs
 - Drug Therapy Safety Management
 - European Studies – Governance and Regulation
 - Global Health – Risk Management & Hygiene Policies
 - Legal Psychology
 - with area of concentration in Criminal Psychology (Psychology in Prisons and Forensic Hospitals)
 - with area of concentration in Forensic Psychology (Statement Validity Analysis and Child Custody Evaluation)
 - Political-Historical Studies

Master's degree programs for continuing education

„Scientific continuing education is continuing education at an academic level offered at universities or supported by university cooperations.“

HRK Recommendation on Scientific Continuing Education
German Rectors' Conference (HRK)

In view of major challenges such as digitization, demographic change and changes in the academic labor market, the opportunity for continuing academic education is more important than ever. In order to advance professionally and gain further qualifications, the keyword is „lifelong learning“.

The Master's degree programs for continuing education offered by the University of Bonn can make an important contribution in this context- for each individual, but also for companies and institutions that want to bring their employees to a new level with suitable training opportunities.





FACULTY OF MATHEMATICS AND NATURAL SCIENCES

Disaster Management and Risk Governance

Natural disasters like floods and earthquakes, epidemics, the effects of climate and demographic change, political and economic impacts of international crises—all these aspects endanger and inhibit people's lives. Adequate preparedness for future catastrophes and professional management when they strike have become increasingly important, calling for better education and training of disaster management experts for all stages: before, during and after the event.

The University of Bonn offers its master's degree program for continuing education in Disaster Management and Risk Governance in cooperation with Germany's Federal Office of Civil Protection and Disaster Assistance (*Bundesamt für Bevölkerungsschutz und Katastrophenhilfe, BBK*). The degree program has an interdisciplinary focus and equips students with problem-solving and other key competences that are useful and necessary for robust catastrophe preparedness and thus robust catastrophe management. The degree program is aimed at university graduates with at least three years of relevant work experience who seek to gain further, academically well-grounded qualifications.

+ POSSIBLE LINES OF WORK

Public authorities, German government corporations (e.g. GIZ), aid organizations (e.g. THW, German Red Cross (DRK)), NGOs, health sector, education (schools, adult education), associations (e.g. the German Committee for Disaster Reduction (DKKV), insurance companies, private sector (e.g. in critical infrastructures), academia (teaching/research at universities, research institutions, etc.)

Degree	Language of instruction	Standard period of study	Start of program
Master of Disaster Management and Risk Governance	German	5 or 6 semester	Winter semester

Admission requirements

- University degree (German or non-German) in a relevant discipline (at least 180 ECTS credits)
- German language proficiency (CEFR level C1)
- A minimum of three years of relevant work experience

Tuition: € 10,500 total



FACULTY OF MATHEMATICS AND NATURAL SCIENCES

Drug Regulatory Affairs

The pharmaceutical industry is subject to strict supervision by both national and international authorities that regulate the development, production, approval and distribution of drugs and medicinal products on the basis of laws, guidelines and recommendations. The complexity and diversity of “regulatory affairs” has steadily increased in the daily operations of pharmaceutical companies due to their need to adapt to EU-wide laws, advancing globalization and the development of new markets, among others.

The master’s degree program for continuing education in Drug Regulatory Affairs is offered by the University of Bonn in conjunction with the German Society for Drug Regulatory Affairs (*Deutsche Gesellschaft für Drug Regulatory Affairs e.V., DGRA*). This degree program is interdisciplinary, spanning the fields of pharmacy, law and medicine. It is aimed at university graduates with at least two years of relevant work experience who seek to gain additional, academically well-grounded qualifications to fill a demanding position in a regulatory affairs department or related area.

+ POSSIBLE LINES OF WORK

Pharmaceutical industry, national and international pharmaceutical oversight authorities involved in approval processes, German federal authorities under the Federal Ministry of Health, centers for clinical studies, contract research institutions, consulting firms, law firms, ethics commissions, trade associations, specialized companies, academia (teaching/research at universities, research institutions, etc.)

Degree	Language of instruction	Standard period of study	Start of program
Master of Drug Regulatory Affairs (M.D.R.A)	German and English	4 semester	Winter semester
Admission requirements			
<ul style="list-style-type: none"> • University degree (German or non-German) in a relevant discipline (at least 180 ECTS credits) • German language proficiency (CEFR level C1) • English language proficiency (CEFR level B2) • A minimum of two years of relevant work experience 			
Tuition: € 8,000 total			



FACULTY OF MATHEMATICS AND NATURAL SCIENCES

Drug Therapy Safety Management

Drugs are an important part of therapy for many illnesses — but the more a patient needs, the more critical it becomes to ensure that the medicines work safely together. It is a task that demands specially qualified experts in a range of professional fields: physicians, pharmacists, and nursing staff with advanced qualifications in the field of drug therapy safety management are on the front lines in preventing unnecessary side effects and interactions, hospitalizations, or life-threatening situations. Alongside expertise in drug interactions, cooperation across various professional fields is required to identify and assess risk situations, and navigate the prescription process as safely as possible.

The master's degree for continuing education in Drug Therapy Safety Management is offered by the University of Bonn in association with Heidelberg University and the University of Tübingen. Additional project partners providing drug therapy safety management expertise for this degree program include the Federal Institute for Drugs and Medical Devices (BfArM) and the Institute of Patient Safety in the Faculty of Medicine. This cross-disciplinary degree program is especially, but not exclusively, oriented toward university graduates in the fields of medicine, pharmacy, and nursing who have already gathered at least one year of relevant professional experience and who wish to expand their qualifications in a scientifically sound manner.

+ POSSIBLE LINES OF WORK

AMTS experts in care facilities, hospitals, pharmacies, physicians' practices, health insurance companies, and oversight agencies

Degree	Language of instruction	Standard period of study	Start of program
Master of Science (MSc)	German	4 semester	Winter semester
Admission requirements			
<ul style="list-style-type: none"> • University degree (German or non-German) in a relevant discipline (at least 180 ECTS credits) • German language proficiency (CEFR level C1) • English language proficiency (CEFR level B2) • A minimum of one year of relevant work experience 			
Tuition: € 8,000 total			



FACULTY OF ARTS

European Studies – Governance and Regulation

The European Union (EU) is an economic and political union of currently 28 member states. The impact of the EU on the lives of its citizens and its role globally are marked to a significant degree by the dynamic interplay between governance and regulation. Governance legitimizes regulation and is necessary, for example, to assure the proper functioning of the EU Single Market.

The master's degree program for continuing education in European Studies – Governance and Regulation is offered by the Center for European Integration Studies (Zentrum für Europäische Integrationsforschung, ZEI) and the University of Bonn. The degree program has an interdisciplinary focus and is oriented toward the pillars of governance and regulation. These two pillars reflect the political and jurisprudential significance of the problems surrounding European integration. The program is aimed at university graduates with at least one year of relevant work experience who wish to gain further, academically well-grounded qualifications to fill a demanding position at an EU institution, an international or non-governmental organization, a national administration or a national or multinational corporation.

+ POSSIBLE LINES OF WORK

EU organs or institutions (e.g. policy consulting, lobbying), IOs, NGOs, national administrations (e.g. parliaments, ministries), private economy (e.g. corporate consulting, human resources, marketing, controlling)

Degree	Language of instruction	Standard period of study	Start of program
Master of European Studies	English	2 semester	Winter semester
Admission requirements			
<ul style="list-style-type: none"> • University degree (German or non-German) in a relevant discipline (at least 240 ECTS credits) • English language proficiency (CEFR level C1) • Minimum grade of 3.0 or local equivalent • A minimum of one year of relevant work experience 			
Tuition: € 6,500 total			



Global Health – Risk Management & Hygiene Policies

Global health is the vision of a world free of avoidable diseases, in which physical and mental health is promoted in every society and where the overall life expectancy of people increases. Essential measures to achieve these goals are strengthening national health care systems, fighting antibiotic resistance, curbing diseases and improving global pandemic preparedness. The master's degree program for continuing education in Global Health Risk Management & Hygiene Policies is offered by the University of Bonn in cooperation with the Institute for Environment and Human Security (EHS) at United Nations University (UNU) and is largely oriented towards the UN's sustainable development goals. Students in this degree program learn about strategies and requirements of preventing and controlling health risks and of securing the promotion and protection of health, supply structures and protective measures against natural catastrophes, which are based on the strategies and recommendations of the World Health Organization (WHO).

This interdisciplinary degree program is intended for university graduates with at least two years of relevant work experience who seek to gain further, academically well-grounded qualifications to fill a demanding position as a global health professional.

+ POSSIBLE LINES OF WORK

International institutions and organizations (e.g. WHO, World Bank, UNEP, UNICEF), national health care systems (e.g. public authorities, ministries), non-governmental organizations (NGOs), private economy (e.g. pharmaceutical companies, private health care sector), academia (teaching/research at universities, research institutions, etc.)

Degree	Language of instruction	Standard period of study	Start of program
Master of Science (MSc)	English	4 semester	Winter semester
Admission requirements			
<ul style="list-style-type: none"> • University degree (German or non-German) in a relevant discipline (at least 180 ECTS credits) • English language proficiency (CEFR level B2) • A minimum of two years of relevant work experience 			
Tuition: € 18,000 total			



FACULTY OF ARTS

Legal Psychology

As a sub-discipline of psychology, legal psychology deals with the application of psychological theories, methods and knowledge to the legal system. It includes forensic (judicial) psychology and criminal psychology (e.g. analyses of criminal behavior, prognoses, prevention) but also areas that cannot be attributed to a function that “serves” the law, including analyses of the legal use of psychological concepts such as “will” or “intent” or the psychology of how judges arrive at their judgments.

Legal psychology can be studied at the University of Bonn within two master’s degree programs for continuing education with different areas of concentration: “Criminal Psychology (Psychology in Prisons and Forensic Hospitals)” and “Forensic Psychology (Statement Validity Analysis and Child Custody Evaluation)”. Depending on the area of concentration, the program qualifies graduate psychologists with relevant professional experience for employment in the area of criminal psychology criminal psychology (psychological service in prisons or forensic hospitals) resp. for employment as a court expert.

+ POSSIBLE LINES OF WORK

Criminal psychology (psychological service at prisons and forensic hospitals), court expert, police service, academia (teaching/research at universities and research institutions, etc.)

Degree	Language of instruction	Standard period of study	Start of program
Master of Science (MSc)	German	4 semester	Winter semester
Admission requirements			
<ul style="list-style-type: none"> • University degree (German or non-German) in a relevant discipline (at least 180 ECTS credits) • German language proficiency (CEFR level C2) • Minimum grade of 2.5 or local equivalent • A minimum of one year of relevant work experience 			
Tuition: € 5,000 per year			



Political-Historical Studies

Political education is a necessary element of a free and open society that, in the course of the history of the Federal Republic of Germany, has evolved into a separate policy area. Effective work in this field requires not only thorough and up-to-date knowledge of politics, contemporary history, media and economics but also a high level of competence in methodologies and didactics.

The master's degree program for continuing education in Political-Historical Studies is offered by the University of Bonn in close cooperation with political foundations, museums, media organizations and institutions of political-historical education and mediation. The program straddles the disciplines political science, history and media studies. It is aimed at university graduates with a minimum of one year of relevant work experience who wish to gain additional qualifications that are both practice-oriented and academically sound.

+ POSSIBLE LINES OF WORK

Work in political-historical education and mediation, museums/historic sites, libraries/archives, (political) foundations, adult education, national authorities/ministries, international organizations (IOs), non-governmental organizations (NGOs), academia (teaching/research at universities, research institutions, etc.)

Degree	Language of instruction	Standard period of study	Start of program
Master of Arts (MA)	German	4 semester	Winter semester
Admission requirements			
<ul style="list-style-type: none"> • University degree (German or non-German) in a relevant discipline (at least 180 ECTS credits) • German language proficiency (CEFR level C2) • English language proficiency (CEFR level B2) • A minimum of one year of relevant work experience 			
Tuition: € 7,500 total			

Degree programs A–Z

	Degree Program	Refer to	Page	
A	Agricultural and Food Economics (MSc)		46	
	Agricultural Economics and Agricultural Social Sciences (MEd Voc, Minor Professional Discipline)	Agricultural Science	100	
	Agricultural Science (MEd Voc, Major Professional Discipline)		100	
	Agricultural Sciences and Resource Management in the Tropics and Subtropics (MSc)		47	
	Agronomy (Crop Production) (MEd Voc, Minor Professional Discipline)	Agricultural Science	100	
	Animal Sciences (Animal Husbandry) (MEd Voc, Minor Professional Discipline)	Agricultural Science	100	
	Animal Sciences (MSc)		48	
	Anthropology of the Americas (MA)		8	
	Applied Linguistics (MA)		9	
	Archaeological Sciences (MA)		10	
Art History (MA)		11		
Asian Studies (MA)		12		
Astrophysics (MSc)		49		
B	Biochemistry (MSc)		50	
	Biology (MEd Gr/Co)		82	
C	Catholic Religious Education (MEd Gr/Co)		83	
	Chemistry (MEd Gr/Co)		88	
	Chemistry (MSc)		51	
	Comparative Literature (MA)		13	
	Computer Science (MEd Gr/Co)		85	
	Computer Science (MSc)		52	
	Crop Sciences (MSc)		53	
	Cultures of Modernity in Music and Sound (MA)		14	
	D	Dependency and Slavery Studies (MA)		15
		Disaster Management and Risk Governance (Master's degree programs for continuing education)		105
		Drug Therapy Safety Management (Master's degree programs for continuing education)		107
	E	Drug Regulatory Affairs (Master's degree programs for continuing education)		106
		Drug Research (MSc)		54
		Economics (MSc)		55

	Degree Program	Refer to	Page
	Ecumenical Studies (MA)		16
	Educational Sciences(MEd Gr/Co)		81
	Educational Sciences (MEd Voc)		81
	English (MEd Gr/Co)		86
	English Literatures and Cultures (MA)		17
	European and Asian Art History (MA)		18
	European Studies – Governance and Regulation (Master’s degree programs for continuing education)		108
F	Extended Ecumenical Studies (MA)	Ecumenical Studies	16
G	Food Technology (Food Engineering) (MEd Voc, Minor Professional Discipline)	Nutrition Science and Home Economics	101
	French (MEd Gr/Co)		87
	Geochemistry/Petrology (MSc)		56
	Geodesy and Geoinformation (MSc)		57
	Geodetic Engineering (MSc)		58
	Geography (MEd Gr/Co)		88
	Geography (MSc)		59
	Geography of Environmental Risks and Human Security (MSc)		60
	Geology (MSc)		61
	German (MEd Gr/Co)		89
	German and Comparative Literature (MA)		19
	German Language and Literature (MA)		20
	German-French Studies (MA)		21
	German-Italian Studies (MA)		22
	Global Health – Risk Management & Hygiene Policies (Master’s degree programs for continuing education)		109
	Greek (MEd Gr/Co)		90
H	History (MA)		23
	History (MEd Gr/Co)		89
I	Immunobiology: from Molecules to Integrative Systems (MSc)		62
	Interreligious Studies – Philosophy of Religions (MA)		24
	Italian (MEd Gr/Co)		92
L	Latin (MEd Gr/Co)		93
	Latin American Cultural Studies / Estudios culturales de América Latina (MA)		25

Degree programs A–Z

Degree Program	Refer to	Page
Legal Psychology with area of concentration in Criminal Psychology (Psychology in Prisons and Forensic Hospitals) (Master's degree programs for continuing education)	Legal Psychology	110
Legal Psychology with area of concentration in Forensic Psychology (Statement Validity Analysis and Child Custody Evaluation) (Master's degree programs for continuing education)	Legal Psychology	110
Life Science Informatics (MSc)		63
Linguistics (MA)		26
M Market and Consumption (MEd Voc, Minor Professional Discipline)	Nutrition Science and Home Economics	101
Mathematics (MEd Gr/Co)		94
Mathematics (MSc)		64
Media Studies (MA)		27
Medical Immunosciences and Infection (MSc)		65
Medication Safety (Master's degree programs for continuing education)		110
Medieval Studies (MA)		28
Microbiology (MSc)		66
Molecular Cell Biology (MSc)		67
Molecular Food Technology (MSc)		68
N Nature Conservation and Landscape Ecology (MSc)		69
Neurosciences (MSc)		70
North American Studies (MA)		29
Nutrition Science and Home Economics (MEd Voc, Major Professional Discipline)		101
Nutrition Sciences (MSc)		71
O Old Catholic and Ecumenical Theology (MA)		30
Organismic Biology, Evolutionary Biology and Paleobiology (OEP Biology) (MSc)		72
P Paleontology (MSc)		73
Philosophy (MA)		31
Philosophy (MEd Gr/Co)		95
Physics (MEd Gr/Co)		96
Physics (MSc)		74
Physics of the Earth and Atmosphere (MSc)		75
Plant Sciences (MSc)		76

Degree Program	Refer to	Page
Political Science (MA)		32
Political-Historical Studies (Master's degree programs for continuing education)		111
Protestant Religious Education (MEd Gr/Co)		97
Protestant Theology (MA)		33
Provenance Research and History of Collecting (MA)		34
Psychology (MSc)		77
Renaissance Studies (MA)		35
Romance Studies (MA)		36
Scandinavian Studies (MA)		37
Slavery Studies (MA)		38
Social Sciences (MEd Gr/Co)		98
Sociology (MA)		40
Spanish (MEd Gr/Co)		99
Spanish Culture and European Identity (MA)		41
Transcultural Studies / Cultural Anthropology (MA)		42
Transnational European and East Asian Culture and History – TEACH (MA)		43

R

S

T

KEY

MA Master of Arts

MSc Master of Science

MEd | Gr/Co Master of Education for grammar and comprehensive schools

MEd | Voc Master of Education for vocational schools

ONLINE REFERENCES

www.uni-bonn.de/studying

www.uni-bonn.de/degree-programs

www.uni-bonn.de/application-portal

www.uni-bonn.de/study-advisory-service

Photo credits:

University of Bonn, colourbox.de, unsplash.com, private, Christian Wild von Hohenborn