



AND  
ANA

UNIVERSITY

# Become your best

You have big plans and bigger dreams. To achieve them, you need to tap into your potential and become your best.

At Indiana University Bloomington, you'll have abundant opportunities to learn, get experience, and grow—so you're ready for your career and your life.

Your future is bright. We want to help you shine.

**You are IU's third century.  
Let's forge the future together.**

## Inside ✨

Academics / 2

Majors / 4

Experiences / 6

Campus / 12

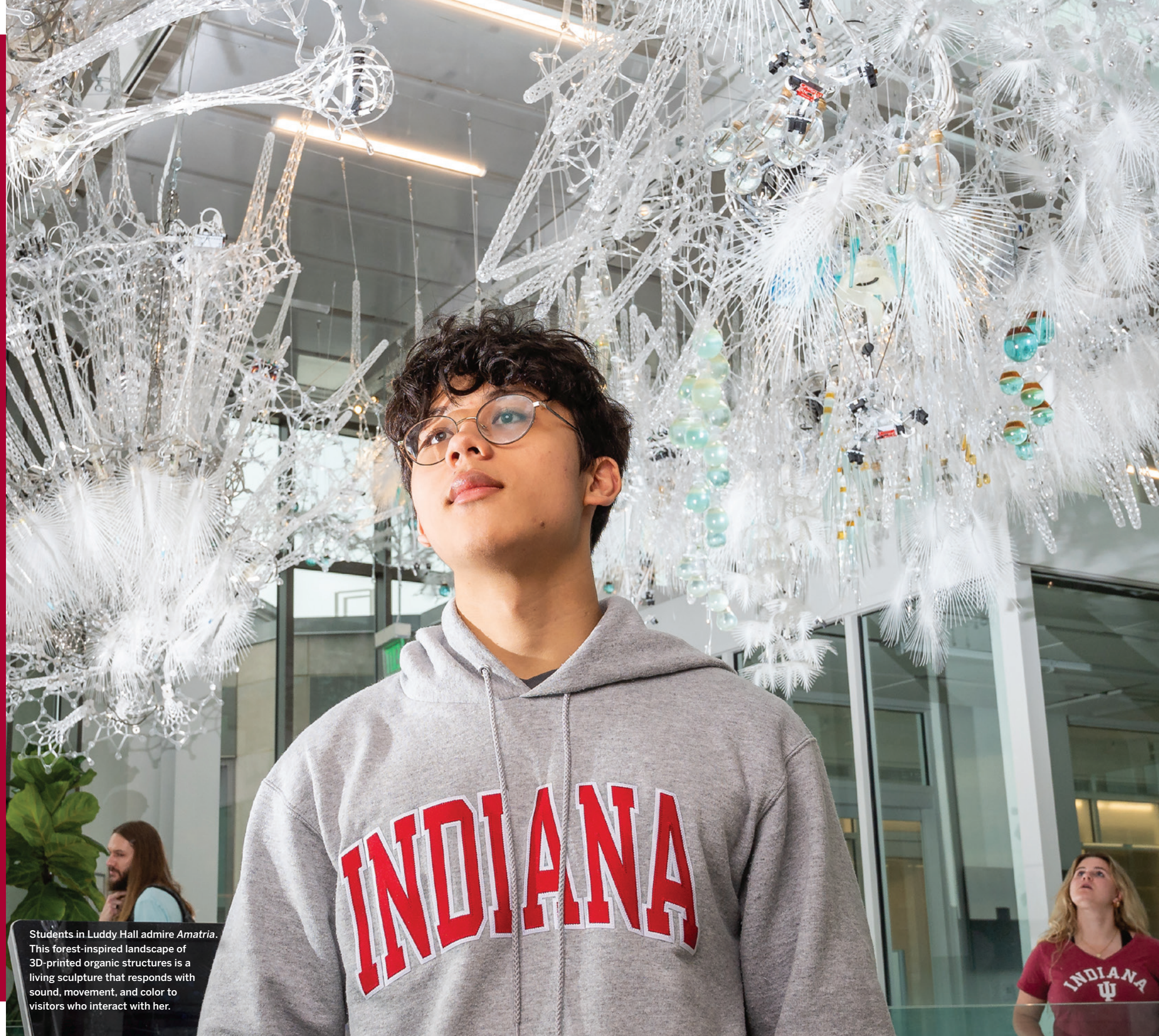
Traditions and spirit / 14

Community / 16

Careers / 18

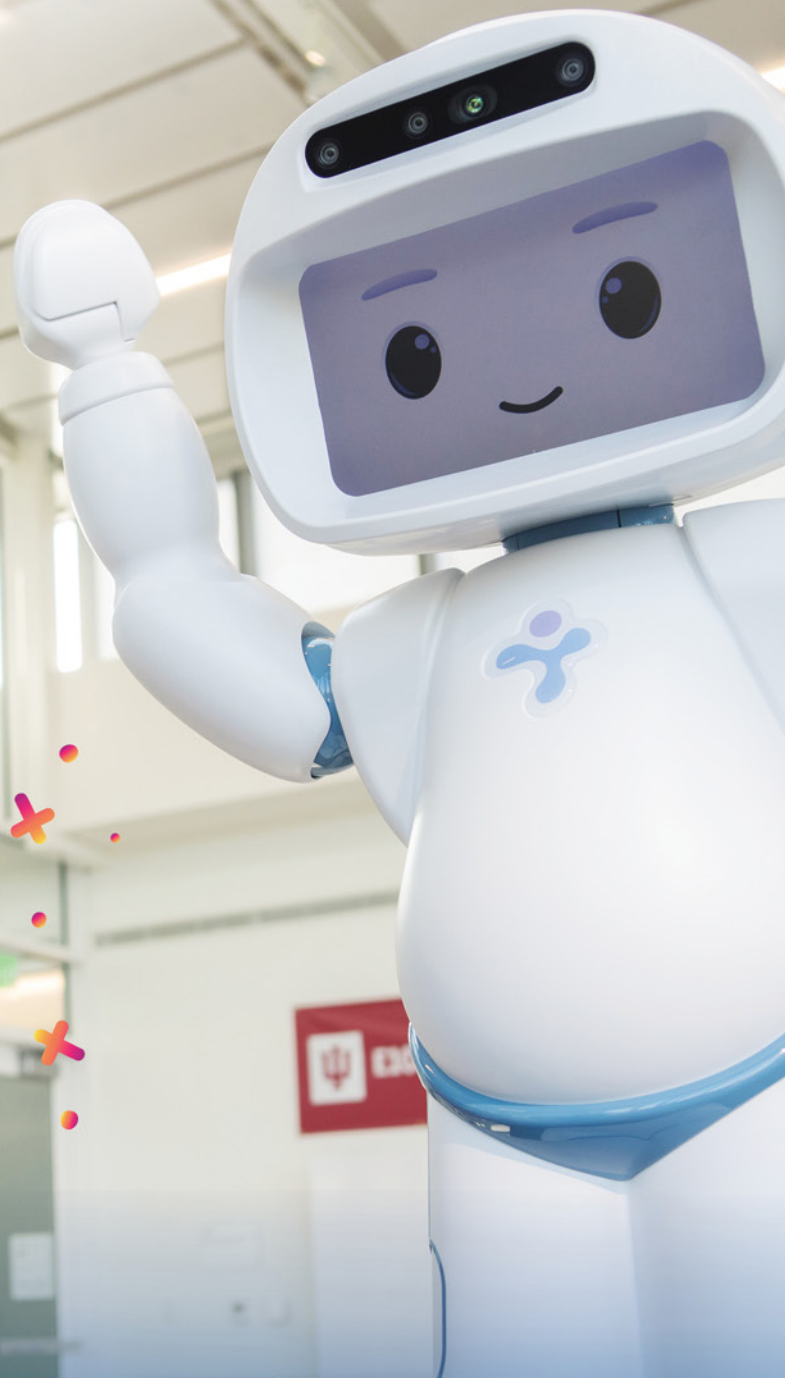
How to apply / 22

Cost and scholarships / 23



Students in Luddy Hall admire *Amatria*. This forest-inspired landscape of 3D-printed organic structures is a living sculpture that responds with sound, movement, and color to visitors who interact with her.

IU's globally-recognized Luddy School of Informatics, Computing, and Engineering inspired international student and Wells Scholar **Agness Lungu** to leave her home in Lusaka, Zambia, to study engineering, mathematics, and journalism. Passionate about artificial intelligence and robotics, Agness was drawn to Luddy for its highly specialized intelligent systems engineering program, which encompasses each of her interests.



# SPARK

YOUR  
CURIOSITY  
AND  
CAREER

**An IU education is one of the world's best.**

There's no single path to becoming your best. So we empower you to make your own.

- Personalize your education by combining programs, specializing, or creating your own major or minor.
- Prepare for the careers of tomorrow.
- Hone the essential and timeless career skills employers want.
- Create or discover something new.
- Be taught, inspired, and mentored by our faculty.

1:3

graduating seniors have studied abroad

2021 Open Doors Report  
International Education Exchange

80+

languages taught, the most in the country

17:1

student-faculty ratio

66%

of undergrad classes have fewer than 30 students



# 200+ majors. Choose one or more.

Explore. Mix and match programs to create an education that matches your ambitions. IU Bloomington's unique entry point for undergrads—University Division—gives you the freedom to decide which interests you want to pursue.

IU also has hundreds of graduate and professional programs. See all of IU's programs: [go.iu.edu/majors](https://go.iu.edu/majors)

## Exploratory

This is our most popular freshman option, enabling you to explore before declaring a major—ideally at the end of your first year. During this time, you'll be a student in University Division, the academic and advising home for most new undergrads. You can also start your career exploration at the Career Development Center.

## College of Arts + Sciences [college.indiana.edu](https://college.indiana.edu)

Advanced Chinese Language and Culture\*  
African American and African Diaspora Studies  
African American and African Diaspora Studies/English  
African American and African Diaspora Studies/History  
African American and African Diaspora Studies/Religious Studies  
African American and African Diaspora Studies/Sociology  
American Studies  
Animal Behavior  
Anthropology  
Anthropology/Linguistics  
Art History  
Astronomy and Astrophysics  
Atmospheric Science  
Biochemistry  
Biology

Biotechnology  
Business German\*  
Chemistry  
Classical Civilization  
Classical Studies (Greek, Latin)  
Clinical Psychological Science  
Cognitive Science  
Comparative Literature  
Computational Linguistics  
Computer Science  
Criminal Justice  
Dance  
Dutch Studies\*  
Earth and Atmospheric Sciences  
Earth Science  
Economics  
Economics/Mathematics  
Economics/Political Science  
English  
Environmental Geoscience  
Environmental and Sustainability Studies\*\*  
Environmental Science\*\*  
Folklore and Ethnomusicology  
Food Studies\*  
French  
French and Francophone Global Studies\*  
Gender Studies  
Geographic Information Systems and Remote Sensing\*  
Geography  
Germanic Studies  
Global Human Diversity\*  
History  
Human Biology  
Individualized Major Program  
Italian  
Jewish Studies  
Liberal Arts and Management\*  
Liberal Studies

Linguistics  
Management and Human Organization  
Mathematics  
Medieval Studies\*  
Microbiology  
Molecular Life Sciences  
Musical Theatre  
Neuroscience  
Organizational and Business Psychology  
Philosophy  
Philosophy/Political Science  
Philosophy/Religious Studies  
Physics  
Political and Civic Engagement\*  
Political Science  
Portuguese  
Psychology  
Psychology of Business\*  
Religious Studies  
Slavic and East European Languages and Cultures  
Spanish and Hispanic Culture for Global Business\*  
Social Research in Health and Medicine\*  
Sociology  
Spanish  
Speech, Language, and Hearing Sciences  
Statistics  
TESOL and Second Language Acquisition\*  
Theatre and Drama

*The Media School; the Eskenazi School of Art, Architecture and Design; and the Hamilton Lugar School of Global and International Studies are part of the College of Arts and Sciences.*

## Eskenazi School of Art, Architecture + Design [eskenazi.indiana.edu](https://eskenazi.indiana.edu)

Comprehensive Design  
Fashion Design  
Interior Design  
Merchandising  
Studio Art

## Hamilton Lugar School of Global and International Studies [hls.indiana.edu](https://hls.indiana.edu)

African Studies\*  
Cybersecurity and Global Policy\*\*\*  
Central Eurasian Studies  
East Asian Languages and Cultures  
East Asian Studies  
European Studies\*

Global Service and Peace Corps Preparation\*  
India Studies  
Indic Languages and Cultures\*  
International Law and Institutions  
International Studies  
Islamic Studies\*  
Latin American and Caribbean Studies\*  
Middle Eastern Languages and Cultures

## Jacobs School of Music [music.indiana.edu](https://music.indiana.edu)

Analog Audio Electronics\*  
Audio Engineering and Sound Production  
Ballet  
Composition  
Historical Performance  
Jazz Studies  
Music Education  
Performance  
Rock History\*

*Students majoring in ballet, composition, historical performance, jazz studies, or performance have the additional option of pursuing an outside field offered by another school or college at IU Bloomington.*

## Kelley School of Business [kelley.iu.edu](https://kelley.iu.edu)

Accounting  
Business Analytics (co-major only)  
Digital and Social Media Business Applications (co-major only)  
Digital Technology Management (co-major only)  
Economic Consulting  
Entrepreneurship and Corporate Innovation  
Finance  
Information Systems  
International Business (co-major only)  
Law, Ethics, and Decision Making (co-major only)  
Leading Diverse, Equitable, and Inclusive Organizations (co-major only)  
Management  
Marketing  
Operations Management  
Professional Sales  
Public Policy Analysis  
Real Estate  
Supply Chain Management  
Sustainable Business (co-major only)

## Luddy School of Informatics, Computing, and Engineering [luddy.indiana.edu](https://luddy.indiana.edu)

Computer Science  
Cybersecurity and Global Policy\*\*\*  
Data Science  
Informatics  
Intelligent Systems Engineering

## O'Neill School of Public and Environmental Affairs [oneill.indiana.edu](https://oneill.indiana.edu)

Applied Research and Inquiry\*  
Arts Administration\*  
Arts Management  
Environmental and Sustainability Studies\*\*  
Environmental Management  
Environmental Science\*\*  
Healthcare Management and Policy  
Human Resource Management  
Law and Public Policy  
Management  
Nonprofit Leadership Alliance\* (externally awarded)  
Nonprofit Management\*  
Nonprofit Management and Leadership  
Policy Analysis  
Public Affairs\*  
Public Financial Management  
Public Health\*  
Public Management\*  
Public Management and Leadership  
Urban Studies\*

## School of Education [education.indiana.edu](https://education.indiana.edu)

Counseling and Student Services  
Early Childhood Education (P–3)  
Elementary Education (K–6)  
Higher Education and Student Affairs\*  
Music Education (P–12)  
Secondary Education (5–12), with content fields in:  
Chemistry  
Earth/Space Science  
Health  
Journalism  
Language Arts/English  
Life Science/Biology  
Mathematics  
Physics  
Social Studies  
Special Education—Elementary (K–6)

Special Education—Secondary (5–12), with content fields in:  
Language Arts/English  
Mathematics  
Science  
Visual Arts Education (P–12)  
World Language Education (P–12), with content fields in:  
French  
German  
Latin  
Russian  
Spanish

## School of Nursing [nursing.indiana.edu](https://nursing.indiana.edu)

Nursing

## School of Public Health-Bloomington [publichealth.indiana.edu](https://publichealth.indiana.edu)

Community Health  
Dietetics  
Environmental Health  
Epidemiology  
Exercise Science  
Fitness and Wellness  
Human Development and Family Studies  
Martial Arts\*  
Nutrition Science  
Parks, Recreation, and the Outdoors  
Recreational Therapy  
Safety  
Safety Management\*  
Sport Marketing and Management  
Tourism, Hospitality, and Event Management  
Underwater Resource Management\*  
Youth Development

## School of Social Work [socialwork.indiana.edu](https://socialwork.indiana.edu)

Labor Studies  
Social Work

## The Media School [mediaschool.indiana.edu](https://mediaschool.indiana.edu)

Cinematic Arts  
Game Design  
Journalism  
Media  
New Media and Interactive Storytelling\*

Design your own major:  
[go.iu.edu/imp](https://go.iu.edu/imp)

\*Certificate only \*\*Jointly administered by the College of Arts and Sciences and the O'Neill School of Public and Environmental Affairs \*\*\*Jointly offered by the Hamilton Lugar School of Global and International Studies and the Luddy School of Informatics, Computing, and Engineering

**Keaton Weber** decided to attend IU so he could pursue a major in music education and a minor in conducting at the highly-regarded Jacobs School of Music. Passionate about percussion, Keaton appreciated the opportunity to enjoy a large campus experience while still receiving a world-class music degree.

# DEFINE YOUR PASSIONS

A native of Greencastle, Indiana, **Abby Teipen** fell in love with biology long before college. Upon visiting, Abby recognized the university for what it is: "I saw how many opportunities IU promised, so I took a chance and applied. I haven't looked back since!" Abby's enthusiasm and dedication earned her a place working alongside a professor in a research lab, where she gets real-world, hands-on experience.

# ADVENTURE OF A LIFETIME

**380+ overseas study programs give you the world.**

They span 70+ countries and 20 languages, including English. Stays range from a few days to a full year.

IU students have interned for European fashion houses. Analyzed IT development in India. Taught reading and writing to children in Rwanda. Created documentaries in Ecuador. So where will you go, and what will you do?

**Morgan McKown** took this photo on a trip to Morocco during her semester in London. While abroad, she worked toward her degree in healthcare management and policy by studying politics and global development, which informed her understanding of health policies in the United States and other countries.

## Get noticed by employers, and get ready to excel after they hire you.

### Internships

Get work experience in your future career, build your network of contacts, and see what kind of workplace suits you.

### Leadership opportunities

Complete the Hoosier Leadership Program, serve in IU Student Government, direct a student organization, and more.

### Service

Enrich your life and help others through service-learning courses, IU Corps, alternative breaks, and student organizations.

### Hutton Honors College

Join a community of talented and highly motivated students with plenty of unique programming and opportunities.

More ways to get experience and prepare for what's next:

- Train for a financial services career in the Investment Banking Workshop.
- Devise solutions to global policy challenges in the IU Diplomacy Lab.
- Launch your research career in the Science, Technology, and Research Scholars (STARS) program.
- Tell stories through the *Indiana Daily Student*, IU Student Television, and WIUX radio.
- Help nonprofits with technology in the Serve IT clinic.
- Teach students in different cultures through the Global Gateway for Teachers program.
- Debut your mini-collection in the IU Fashion Show.
- Prepare for advanced study and a career in law, medicine, or health through the Health Professions and Prelaw Center.



**Spencer Biery** started in IU's University Division (UD) before entering a degree-granting IU school. His UD advisor, Alice Dobie, was a key source of ideas, feedback, and support as he tried out majors and found his best fit: international studies. Last summer he studied in the Dominican Republic.

# EXPERIENCE THAT MAKES YOU

# STAND OUT

## 3,000+

for-credit internships completed by IU undergrads in 2020–2021, plus thousands more noncredit internships

**Sade Roberson** interned at nearby French Lick Resort, in the magnificent, historic West Baden Springs Hotel. She learned all about operating a hotel, confirmed that she wants to work in hospitality, and spent a summer doing what she loves: making guests happy.





STUNNING



WE'RE ONE OF  
THE MOST  
INSTAGRAMMED  
PLACES IN  
INDIANA.

HERE'S WHY.

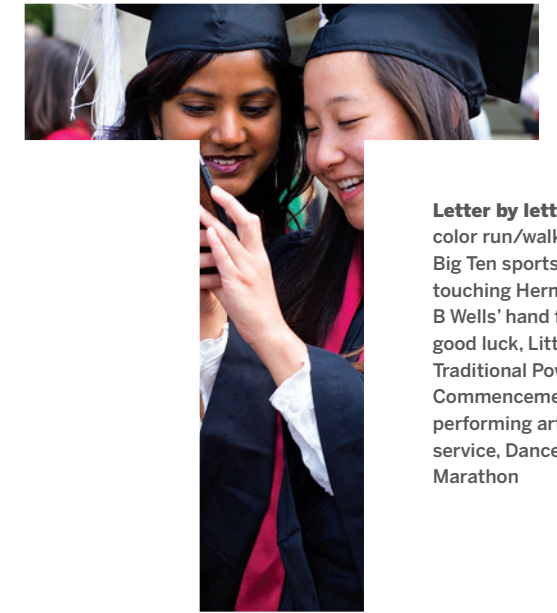
Plan your visit:  
[go.iu.edu/visit](https://go.iu.edu/visit)





# You can feel the Hoosier spirit in every IU tradition.

You'll treasure our 200+ years of traditions. And they'll give you and your friends reasons to return as alumni.



**Letter by letter:**  
color run/walk,  
Big Ten sports,  
touching Herman  
B Wells' hand for  
good luck, Little 500,  
Traditional Powwow,  
Commencement,  
performing arts,  
service, Dance  
Marathon



# WELCOME TO YOUR HOME

*away from home*



## You'll find your place in the IU family.

IU is full of ways to form deep bonds, explore what matters to you, and feel at home. It all starts in your residence hall.



**14 residence halls and 9 apartment complexes**

New students are required to live on campus, and you'll be glad you did. You'll make your first IU friends here and you'll have easy access to tutoring and advising.



**7 cultural centers and institutes**

Celebrate cultures you love, and find others you want to learn more about.



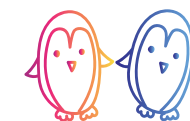
**Bloomington, the perfect college town**

IU is located in the heart of this 80,000-person small city. Shop on Kirkwood Avenue. Enjoy international cuisine. See great shows. Explore miles of trails. And find even more people and activities you like.



**20+ learning communities**

Live with students who share one of your interests, like business, health careers, or media. You'll explore that interest together.



**750+ student organizations**

Have fun, build your network of connections, and get leadership experience.



**A space for everyone**

From the LGBTQ+ Culture Center to the Neurodiversity Coalition, you'll find a place to connect with others who understand.



**Welcome Week and Hoosier Experience events**

Exciting activities. Time-honored traditions. Start your first year strong and build a foundation for your entire IU experience.



**Students from 50 states and 140+ countries**

Our 32,000 undergraduates and 10,000 graduate students include people of all kinds, expanding your worldview.

## Class of 2021 outcomes

Bachelor's degree graduates

Full-time jobs in  
**44** **26**  
states countries

Top states for  
full-time employment:

Indiana, Illinois, New York,  
California, Texas

**93%**

of graduates were employed  
full time or part time, entered  
volunteer service or the military,  
or continued their education  
within six months of graduation

This figure uses information on 79%  
of bachelor's degree graduates in our  
undergraduate schools, not including  
the School of Nursing.

**47%**

of IU seniors and alumni who  
applied to medical school  
were admitted to at least one  
(national average: 38%)

**81%**

of IU seniors and alumni  
who applied to law school  
were admitted to at least one  
(national average: 68%)

## Recruiting at IU in 2020–21

**1,700+**

employers actively  
recruited IU students

**25**

career fairs attended  
by 8,000+ students

**2,000+**

undergraduate students  
participated in on-campus  
interviews

**325+**

career workshops helped  
students explore options  
and build skills

Hiring employers  
in 2020–21 included:

Catalent Pharma Solutions  
Eli Lilly and Company  
Amazon.com, Inc.  
Salesforce, Inc.  
Anthem, Inc.  
IU Health  
Epic Systems Corporation  
JPMorgan Chase & Co.  
Bank of America  
Corporation  
AT&T, Inc.  
Target Corporation  
Goldman Sachs  
Crowe LLP  
Deloitte  
EY  
Grant Thornton LLP  
Oracle Corporation  
KPMG LLP  
PwC  
Epic Systems  
RSM  
Kohl's  
Charles Schwab  
Accenture  
Huron Consulting Group  
Grainger, Inc.

The information on this page is from the  
Career Services Metrics Committee and  
the Health Professions and Prelaw Center  
at IU Bloomington.

# INSPIRED



**Morgan Sanders** discovered his entrepreneurial side at age 16, when he started a sneaker resale business, Morgan's Kickz. Now a management major at the Kelley School of Business, Morgan is learning more about himself and business. "No one has ever traveled this post-Covid world before, and we can go down a new road with tons of opportunities for innovation and change."

# TURN YOUR AMBITIONS INTO OPTIONS

For his individualized major in marine biology, **Joshua Stewart** dove into underwater research projects such as studying coral growth on shipwrecks. He received a Ph.D. at Scripps Institution of Oceanography, where he studied manta rays. Now he researches whales at the National Oceanic and Atmospheric Administration and is an associate director of The Manta Trust.

## **XANDRIA McDOWELL, B.S., M.S. 2022**

**At IU:** A Groups Scholar who received her B.S. and M.S. in intelligent systems engineering at the Luddy School of Informatics, Computing, and Engineering.

**After IU:** Working for a leading aerospace company and serving as a graduate advisor for the National Society of Black Engineers.



## **Ashley Toruno**

**At IU:** Studied public management, learning how to improve communities. Practiced her skills as a summer associate for AmeriCorps VISTA and an intern for USAID in Washington, D.C.

**After IU:** Is a community engagement and policy advocate at ACLU of Indiana.



## **Michael Koryta**

**At IU:** Studied criminal justice. Wrote his first two published novels.

**After IU:** Worked as a private investigator and newspaper reporter before writing full time. Is a best-selling author of 15 suspense novels.



## **Sage Steele**

**At IU:** Studied sports communication. Interned for a radio station and IU Athletics.

**After IU:** Worked her way up through local TV stations and regional networks. Joined ESPN in 2007 and anchors *SportsCenter*.



# LIKE THESE IU GRADS

## **740,000+ IU graduates who will support you**

IU alumni are everywhere, and they're eager to help another Hoosier. One of the world's largest alumni networks, they'll mentor you and connect you with opportunities—while you're a student and throughout your career.

# How to **apply**

1. Review our admissions standards: [go.iu.edu/review](https://go.iu.edu/review)



## 2. Know our deadlines

**November 1 is the early action deadline (non-binding) and the deadline for the highest scholarship consideration.** To meet this deadline, you must submit a complete application for admission, including your official high school transcript, IU-specific essay, and self-reported or official SAT/ACT scores (if applicable\*) by this date.

### Application deadlines

Submit a complete application by this deadline:	Receive a response no later than:
<b>November 1</b>	<b>January 15</b>
<b>February 1</b>	<b>March 15</b>

## 3. Submit a complete application

You have two options to apply:

- Apply IU Application
- Common Application

Only one completed application will be accepted.

You also need to:



**Submit the IU-specific essay** as part of your application. Note:

If you apply via the Common Application, this essay is called the Writing Supplement for IU Bloomington.



**Submit your official high school transcript.**



**If you took the SAT or ACT, share either your official or self-reported scores (if applicable\*) by one of our application deadlines.** Please note: test scores that are listed on your high school transcript do not count as self-reported—you must self-report them on your application or via our self-report form. If you self-report and are offered admission, the offer will be contingent upon receipt of official test scores from testing agencies, which must match or be higher than those you self-reported. If you self-reported scores from multiple tests, you will need to send official score reports for each test.

## Ready, set, apply!



[go.iu.edu/applynow](https://go.iu.edu/applynow)

\*Admission to IU is test-optional. To learn if this is the right path for you, visit: [go.iu.edu/test-optional](https://go.iu.edu/test-optional)

If you're a transfer, intercampus transfer, adult, military/veteran, or second degree applicant or a visiting student, visit our website to learn how and when to apply for undergraduate admission: [go.iu.edu/learn](https://go.iu.edu/learn)

## Students admitted for fall 2022

(44% of students were test-optional)

**Middle 50%** **Average/Median**

<b>High school GPA</b>	3.62–4.00	3.90 median
<b>SAT</b> (Math and Evidence-Based Reading and Writing)	1230–1420	1322 average
<b>ACT</b> (Composite)	27–32	30 average



# Cost and **scholarships**

Estimated costs for 2022–23

	Indiana residents	Nonresidents
Tuition and fees	\$ 11,446	\$ 39,118
Room and board*	\$ 12,228	\$ 12,228
<b>Total direct costs</b>	<b>\$ 23,674</b>	<b>\$ 51,346</b>
Books and supplies*	\$ 900	\$ 900
Transportation*	\$ 712	\$ 712
Personal expenses*	\$ 2,170	\$ 2,170
<b>Total indirect costs</b>	<b>\$ 3,782</b>	<b>\$ 3,782</b>
<b>Total cost of attendance</b>	<b>\$ 27,456</b>	<b>\$ 55,128</b>



These estimates are for full-time undergrads enrolled in 12–18 credit hours per semester in the fall and spring. Most courses are 3 credit hours.

\*Actual costs vary by student, based on student choice, travel habits, and academic program.

## Scholarships



IU offers a variety of scholarship opportunities, including IU Academic Scholarships and Selective Scholarship Application (SSA).

- For maximum consideration, submit a complete application for admission, including an official transcript, an IU-specific essay, and test scores (for SSA) by November 1.
- IU Academic Scholarships are test-optional.
- SSA options may require ACT/SAT scores.
- If you're invited to complete the online SSA, make sure you submit the application and requested documents by the stated deadline.
- Check out the General IU Scholarship Application on [One.IU](https://One.IU) for other scholarship opportunities.

Learn more: [scholarships.indiana.edu](https://scholarships.indiana.edu)

## More financial aid



Make sure to review the steps in the financial aid process in the fall of your senior year.

Your biggest to-do: submit the Free Application for Federal Student Aid (FAFSA) between October 1 and April 15.

Learn more: [studentcentral.indiana.edu](https://studentcentral.indiana.edu)

Estimate your costs and financial aid:

[npc.collegeboard.org/app/indiana](https://npc.collegeboard.org/app/indiana)

## Get moneysmart



Our MoneySmarts program helps you establish good financial habits, make informed financial decisions, and reduce your debt.

Since 2011, we've helped IU Bloomington undergrads reduce their federal student loans by 26%. Fifty-one percent of our 2020–2021 bachelor's degree recipients graduated with no student loan debt. Nationally, that figure was about 43% in 2017–18, the last year for which data is available. In total, about 88% of our 2020–2021 bachelor's degree recipients graduated with either no debt or debt less than \$30,000.

Learn more: [moneysmarts.iu.edu](https://moneysmarts.iu.edu)

## Accomplished and global: our 2021 freshman class

- 64% in the top quarter of their high school class
- 54% Indiana residents
- 42% students from other U.S. states
- 4% international students
- 50% female, • 50% male
- 28% minoritized (African American, Asian American, Latino, American Indian, Native Hawaiian/Pacific Islander, or multiracial)

# BECOME YOUR BEST.

Shape the next 200 years.

## Explore

[admissions.indiana.edu](https://admissions.indiana.edu)



 [futurehoosiersfamilyfriends](#)

 [IUAdmissions](#)

 [IU\\_Admissions](#)

 [IUAdmissions](#)

 [IUAdmissions](#)

## Apply (or just see how)

[go.iu.edu/applynow](https://go.iu.edu/applynow)

## Visit

[go.iu.edu/visit](https://go.iu.edu/visit)

## Contact us

Office of Admissions

812-855-0661

[admissions@indiana.edu](mailto:admissions@indiana.edu)



Indiana University will recruit, hire, promote, educate, and provide services to persons based upon their individual qualifications. Indiana University prohibits discrimination on the basis of age, color, disability, ethnicity, sex, gender identity, gender expression, genetic information, marital status, national origin, race, religion, sexual orientation, or veteran status. Indiana University is an equal opportunity and affirmative action employer and a provider of ADA services. Indiana University does not discriminate on the basis of sex in its educational programs and activities, including employment and admission, as required by Title IX. Questions or complaints regarding Title IX may be referred to the U.S. Department of Education Office for Civil Rights or the university Title IX coordinator. See Indiana University's Non-Discrimination/Equal Opportunity/Affirmative Action policy, which includes contact information, at [go.iu.edu/non-discrimination](https://go.iu.edu/non-discrimination).

The Annual Security Reports, containing policy statements and crime statistics for Indiana University campuses, are available at [protect.iu.edu/police-safety/annual-reports/index.html](https://protect.iu.edu/police-safety/annual-reports/index.html). You can request a physical copy by emailing IU Public Safety at [iups@iu.edu](mailto:iups@iu.edu).

Indiana University offers numerous resources to IU employees, students, and visitors who may need additional assistance while attending, visiting, and/or working for the university. For more information about support services to help you succeed at IU, visit [ada.iu.edu](https://ada.iu.edu).

Design, writing, and photography by IU Studios. Additional photography by Bernard Clark, Ann Schertz, Max Tortoriello, Nicole Wiegand, African American Arts Institute, IU Recreational Sports, Craig Bisacre, Matt Riley, Wout Jan Balhuizen Amsterdam, and Joe Faraoni/ESPN Images.







**INDIANA UNIVERSITY**  
BLOOMINGTON